

COL9A1 Polyclonal Antibody

Catalog # AP69221

Product Information

Application	WB, IHC-P
Primary Accession	P20849
Reactivity	Human, Mouse
Host	Rabbit
Clonality	Polyclonal
Calculated MW	91869

Additional Information

Gene ID	1297
Other Names	COL9A1; Collagen alpha-1(IX) chain
Dilution	WB~~Western Blot: 1/500 - 1/2000. Immunohistochemistry: 1/100 - 1/300. ELISA: 1/5000. Not yet tested in other applications. IHC-P~~N/A
Format	Liquid in PBS containing 50% glycerol, 0.5% BSA and 0.09% (W/V) sodium azide.
Storage Conditions	-20°C

Protein Information

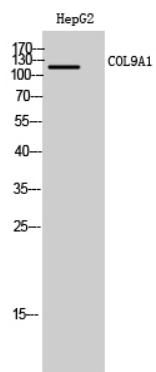
Name	COL9A1
Function	Structural component of hyaline cartilage and vitreous of the eye.
Cellular Location	Secreted, extracellular space, extracellular matrix

Background

Structural component of hyaline cartilage and vitreous of the eye.

Images

Western Blot analysis of HepG2 cells using COL9A1 Polyclonal Antibody



Please note: All products are 'FOR RESEARCH USE ONLY. NOT FOR USE IN DIAGNOSTIC OR THERAPEUTIC PROCEDURES'.