

# Connexin 45 Polyclonal Antibody

Catalog # AP69230

## Product Information

---

<b>Application</b>	WB
<b>Primary Accession</b>	<a href="#">P36383</a>
<b>Reactivity</b>	Human, Mouse, Rat
<b>Host</b>	Rabbit
<b>Clonality</b>	Polyclonal
<b>Calculated MW</b>	45470

## Additional Information

---

<b>Gene ID</b>	10052
<b>Other Names</b>	GJC1; GJA7; Gap junction gamma-1 protein; Connexin-45; Cx45; Gap junction alpha-7 protein
<b>Dilution</b>	WB~~Western Blot: 1/500 - 1/2000. ELISA: 1/40000. Not yet tested in other applications.
<b>Format</b>	Liquid in PBS containing 50% glycerol, 0.5% BSA and 0.09% (W/V) sodium azide.
<b>Storage Conditions</b>	-20°C

## Protein Information

---

<b>Name</b>	GJC1
<b>Synonyms</b>	GJA7
<b>Function</b>	One gap junction consists of a cluster of closely packed pairs of transmembrane channels, the connexons, through which materials of low MW diffuse from one cell to a neighboring cell.
<b>Cellular Location</b>	Cell membrane; Multi-pass membrane protein. Cell junction, gap junction

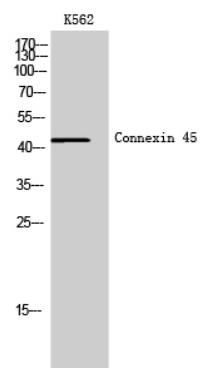
## Background

---

One gap junction consists of a cluster of closely packed pairs of transmembrane channels, the connexons, through which materials of low MW diffuse from one cell to a neighboring cell.

## Images

---



## Western Blot analysis of K562 cells using Connexin 45 Polyclonal Antibody

Please note: All products are 'FOR RESEARCH USE ONLY. NOT FOR USE IN DIAGNOSTIC OR THERAPEUTIC PROCEDURES'.