

# Connexin 47 Polyclonal Antibody

Catalog # AP69232

## Product Information

---

<b>Application</b>	WB, IF
<b>Primary Accession</b>	<a href="#">Q5T442</a>
<b>Reactivity</b>	Human
<b>Host</b>	Rabbit
<b>Clonality</b>	Polyclonal
<b>Calculated MW</b>	47002

## Additional Information

---

<b>Gene ID</b>	57165
<b>Other Names</b>	GJC2; GJA12; Gap junction gamma-2 protein; Connexin-46.6; Cx46.6; Connexin-47; Cx47; Gap junction alpha-12 protein
<b>Dilution</b>	WB~~Western Blot: 1/500 - 1/2000. Immunofluorescence: 1/200 - 1/1000. ELISA: 1/10000. Not yet tested in other applications. IF~~1:50~200
<b>Format</b>	Liquid in PBS containing 50% glycerol, 0.5% BSA and 0.09% (W/V) sodium azide.
<b>Storage Conditions</b>	-20°C

## Protein Information

---

<b>Name</b>	GJC2
<b>Synonyms</b>	GJA12
<b>Function</b>	One gap junction consists of a cluster of closely packed pairs of transmembrane channels, the connexons, through which materials of low MW diffuse from one cell to a neighboring cell. May play a role in myelination in central and peripheral nervous systems.
<b>Cellular Location</b>	Cell membrane; Multi-pass membrane protein. Cell junction, gap junction
<b>Tissue Location</b>	Expressed in central nervous system, in sciatic nerve and sural nerve. Also detected in skeletal muscles

## Background

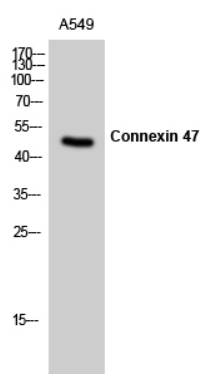
---

One gap junction consists of a cluster of closely packed pairs of transmembrane channels, the connexons, through which materials of low MW diffuse from one cell to a neighboring cell. May play a role in

myelination in central and peripheral nervous systems.

## Images

---



Western Blot analysis of A549 cells using Connexin 47 Polyclonal Antibody

Please note: All products are 'FOR RESEARCH USE ONLY. NOT FOR USE IN DIAGNOSTIC OR THERAPEUTIC PROCEDURES'.