

Copine 8 Polyclonal Antibody

Catalog # AP69243

Product Information

Application	WB, IHC-P, IF, ICC, E
Primary Accession	Q86YQ8
Reactivity	Human, Mouse, Rat
Host	Rabbit
Clonality	Polyclonal
Calculated MW	63108

Additional Information

Gene ID	144402
Other Names	CPNE8; Copine-8; Copine VIII
Dilution	WB~~Western Blot: 1/500 - 1/2000. Immunohistochemistry: 1/100 - 1/300. ELISA: 1/40000. Not yet tested in other applications. IHC-P~~N/A IF~~1:50~200 ICC~~N/A E~~N/A
Format	Liquid in PBS containing 50% glycerol, 0.5% BSA and 0.09% (W/V) sodium azide.
Storage Conditions	-20°C

Protein Information

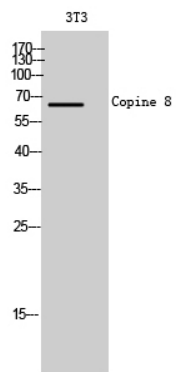
Name	CPNE8 (HGNC:23498)
Function	Probable calcium-dependent phospholipid-binding protein that may play a role in calcium-mediated intracellular processes.

Background

Probable calcium-dependent phospholipid-binding protein that may play a role in calcium-mediated intracellular processes.

Images

Western Blot analysis of 3T3 cells using Copine 8 Polyclonal Antibody



Please note: All products are 'FOR RESEARCH USE ONLY. NOT FOR USE IN DIAGNOSTIC OR THERAPEUTIC PROCEDURES'.