

Coronin 1A Polyclonal Antibody

Catalog # AP69244

Product Information

Application	WB, IHC-P
Primary Accession	P31146
Reactivity	Human, Mouse, Rat
Host	Rabbit
Clonality	Polyclonal
Calculated MW	51026

Additional Information

Gene ID	11151
Other Names	CORO1A; CORO1; Coronin-1A; Coronin-like protein A; Clipin-A; Coronin-like protein p57; Tryptophan aspartate-containing coat protein; TACO
Dilution	WB~~Western Blot: 1/500 - 1/2000. Immunohistochemistry: 1/100 - 1/300. ELISA: 1/40000. Not yet tested in other applications. IHC-P~~N/A
Format	Liquid in PBS containing 50% glycerol, 0.5% BSA and 0.09% (W/V) sodium azide.
Storage Conditions	-20°C

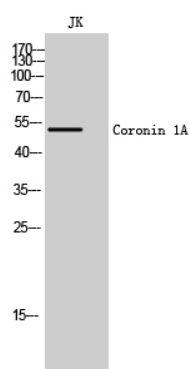
Protein Information

Name	CORO1A
Synonyms	CORO1
Function	May be a crucial component of the cytoskeleton of highly motile cells, functioning both in the invagination of large pieces of plasma membrane, as well as in forming protrusions of the plasma membrane involved in cell locomotion. In mycobacteria-infected cells, its retention on the phagosomal membrane prevents fusion between phagosomes and lysosomes.
Cellular Location	Cytoplasm, cytoskeleton. Cytoplasm, cell cortex. Cytoplasmic vesicle, phagosome membrane. Note=In non-infected macrophages, associated with the cortical microtubule network. In mycobacteria-infected macrophages, becomes progressively relocalized and retained around the mycobacterial phagosomes. Retention on the phagosomal membrane is strictly dependent on mycobacterial viability and not due to impaired acidification (By similarity).
Tissue Location	Expressed in brain, thymus, spleen, bone marrow and lymph node. Low in lung and gut

Background

May be a crucial component of the cytoskeleton of highly motile cells, functioning both in the invagination of large pieces of plasma membrane, as well as in forming protrusions of the plasma membrane involved in cell locomotion. In mycobacteria- infected cells, its retention on the phagosomal membrane prevents fusion between phagosomes and lysosomes.

Images



Western Blot analysis of JK cells using Coronin 1A Polyclonal Antibody

Please note: All products are 'FOR RESEARCH USE ONLY. NOT FOR USE IN DIAGNOSTIC OR THERAPEUTIC PROCEDURES'.