

CPA1 Polyclonal Antibody

Catalog # AP69263

Product Information

| | |
|-------------------|------------------------|
| Application | WB, IHC-P |
| Primary Accession | P15085 |
| Reactivity | Human |
| Host | Rabbit |
| Clonality | Polyclonal |
| Calculated MW | 47140 |

Additional Information

| | |
|--------------------|---|
| Gene ID | 1357 |
| Other Names | CPA1; CPA; Carboxypeptidase A1 |
| Dilution | WB~~Western Blot: 1/500 - 1/2000. Immunohistochemistry: 1/100 - 1/300. ELISA: 1/40000. Not yet tested in other applications. IHC-P~~N/A |
| Format | Liquid in PBS containing 50% glycerol, 0.5% BSA and 0.09% (W/V) sodium azide. |
| Storage Conditions | -20°C |

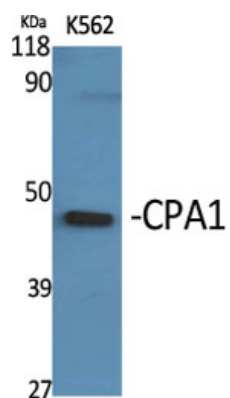
Protein Information

| | |
|-------------------|--|
| Name | CPA1 (HGNC:2296) |
| Synonyms | CPA |
| Function | Carboxypeptidase that catalyzes the release of a C-terminal amino acid, but has little or no action with -Asp, -Glu, -Arg, -Lys or -Pro (PubMed: 20385563 , PubMed: 8806703). Catalyzes the conversion of leukotriene C4 to leukotriene F4 via the hydrolysis of an amide bond (By similarity). |
| Cellular Location | Secreted {ECO:0000250 UniProtKB:Q9UI42}. |

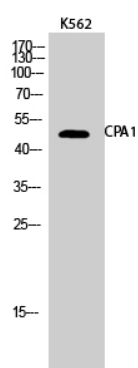
Background

Carboxypeptidase that catalyzes the release of a C- terminal amino acid, but has little or no action with -Asp, -Glu, -Arg, -Lys or -Pro.

Images



Western Blot analysis of various cells using CPA1 Polyclonal Antibody



Western Blot analysis of K562 cells using CPA1 Polyclonal Antibody

Please note: All products are 'FOR RESEARCH USE ONLY. NOT FOR USE IN DIAGNOSTIC OR THERAPEUTIC PROCEDURES'.