

# CPA5 Polyclonal Antibody

Catalog # AP69264

## Product Information

---

Application	WB
Primary Accession	<a href="#">Q8WXQ8</a>
Reactivity	Human, Mouse
Host	Rabbit
Clonality	Polyclonal
Calculated MW	49036

## Additional Information

---

Gene ID	93979
Other Names	CPA5; Carboxypeptidase A5
Dilution	WB~~Western Blot: 1/500 - 1/2000. ELISA: 1/20000. Not yet tested in other applications.
Format	Liquid in PBS containing 50% glycerol, 0.5% BSA and 0.09% (W/V) sodium azide.
Storage Conditions	-20°C

## Protein Information

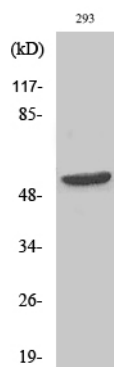
---

Name	CPA5
Cellular Location	Secreted.
Tissue Location	Expression is very low or not detectable.

## Images

---

Western Blot analysis of various cells using CPA5  
Polyclonal Antibody



Please note: All products are 'FOR RESEARCH USE ONLY. NOT FOR USE IN DIAGNOSTIC OR THERAPEUTIC PROCEDURES'.