

# CPN cat Polyclonal Antibody

Catalog # AP69272

## Product Information

---

<b>Application</b>	WB, E
<b>Primary Accession</b>	<a href="#">P15169</a>
<b>Reactivity</b>	Human, Rat, Mouse
<b>Host</b>	Rabbit
<b>Clonality</b>	Polyclonal
<b>Calculated MW</b>	52286

## Additional Information

---

<b>Gene ID</b>	1369
<b>Other Names</b>	CPN1; ACBP; Carboxypeptidase N catalytic chain; CPN; Anaphylatoxin inactivator; Arginine carboxypeptidase; Carboxypeptidase N polypeptide 1; Carboxypeptidase N small subunit; Kininase-1; Lysine carboxypeptidase; Plasma carboxypeptidase B; S
<b>Dilution</b>	WB~~Western Blot: 1/500 - 1/2000. ELISA: 1/20000. Not yet tested in other applications. E~~N/A
<b>Format</b>	Liquid in PBS containing 50% glycerol, 0.5% BSA and 0.09% (W/V) sodium azide.
<b>Storage Conditions</b>	-20°C

## Protein Information

---

<b>Name</b>	CPN1
<b>Synonyms</b>	ACBP
<b>Function</b>	Protects the body from potent vasoactive and inflammatory peptides containing C-terminal Arg or Lys (such as kinins or anaphylatoxins) which are released into the circulation.
<b>Cellular Location</b>	Secreted, extracellular space.
<b>Tissue Location</b>	Synthesized in the liver and secreted in plasma.

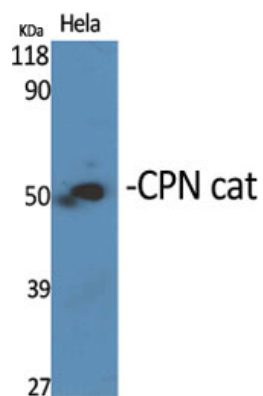
## Background

---

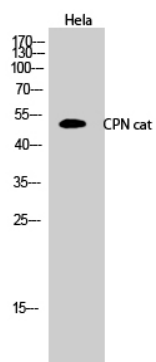
Protects the body from potent vasoactive and inflammatory peptides containing C-terminal Arg or Lys (such as kinins or anaphylatoxins) which are released into the circulation.

## Images

---



Western Blot analysis of various cells using CPN cat Polyclonal Antibody



Western Blot analysis of HeLa cells using CPN cat Polyclonal Antibody

Please note: All products are 'FOR RESEARCH USE ONLY. NOT FOR USE IN DIAGNOSTIC OR THERAPEUTIC PROCEDURES'.