

## OTC Antibody (Center)

Affinity Purified Rabbit Polyclonal Antibody (Pab)

Catalog # AP6928c

### Product Information

---

<b>Application</b>	IHC-P, FC, WB, E
<b>Primary Accession</b>	<a href="#">P00480</a>
<b>Other Accession</b>	<a href="#">P00481</a> , <a href="#">O19072</a> , <a href="#">P11725</a> , <a href="#">Q9N1U7</a>
<b>Reactivity</b>	Human, Rat, Mouse
<b>Predicted</b>	Mouse, Rat, Pig, Bovine
<b>Host</b>	Rabbit
<b>Clonality</b>	Polyclonal
<b>Isotype</b>	Rabbit IgG
<b>Calculated MW</b>	39935
<b>Antigen Region</b>	71-98

### Additional Information

---

<b>Gene ID</b>	5009
<b>Other Names</b>	Ornithine carbamoyltransferase, mitochondrial, Ornithine transcarbamylase, OTCase, OTC
<b>Target/Specificity</b>	This OTC antibody is generated from rabbits immunized with a KLH conjugated synthetic peptide between 71-98 amino acids of human OTC.
<b>Dilution</b>	IHC-P~~1:100~500 FC~~1:10~50 WB~~1:1000 E~~Use at an assay dependent concentration.
<b>Format</b>	Purified polyclonal antibody supplied in PBS with 0.09% (W/V) sodium azide. This antibody is purified through a protein A column, followed by peptide affinity purification.
<b>Storage</b>	Maintain refrigerated at 2-8°C for up to 2 weeks. For long term storage store at -20°C in small aliquots to prevent freeze-thaw cycles.
<b>Precautions</b>	OTC Antibody (Center) is for research use only and not for use in diagnostic or therapeutic procedures.

### Protein Information

---

<b>Name</b>	OTC ( <a href="#">HGNC:8512</a> )
<b>Function</b>	Catalyzes the second step of the urea cycle, the condensation of carbamoyl phosphate with L-ornithine to form L-citrulline (PubMed: <a href="#">2556444</a> , PubMed: <a href="#">6372096</a> , PubMed: <a href="#">8112735</a> ). The urea cycle ensures the

detoxification of ammonia by converting it to urea for excretion (PubMed:[2556444](#)).

**Cellular Location**

Mitochondrion matrix

**Tissue Location**

Mainly expressed in liver and intestinal mucosa.

## Background

---

OTC is a mitochondrial matrix enzyme. Missense, nonsense, and frameshift mutations in this enzyme lead to ornithine transcarbamylase deficiency, which causes hyperammonemia.

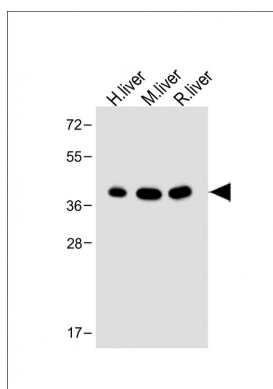
## References

---

Hansmann, F., et al., Neurosci. Lett. 449 (1), 76-80 (2009)

## Images

---



All lanes : Anti-OTC Antibody (Center) at 1:2000 dilution  
Lane 1: Human liver lysate Lane 2: Mouse liver lysate  
Lane 3: Rat liver lysate Lysates/proteins at 20 µg per lane.  
Secondary Goat Anti-Rabbit IgG, (H+L), Peroxidase  
conjugated at 1/10000 dilution. Predicted band size : 40  
kDa Blocking/Dilution buffer: 5% NFDM/TBST.

## Citations

---

- [Modeling lethal X-linked genetic disorders in pigs with ensured fertility.](#)

Please note: All products are 'FOR RESEARCH USE ONLY. NOT FOR USE IN DIAGNOSTIC OR THERAPEUTIC PROCEDURES'.