

# Cyclin E1 Polyclonal Antibody

Catalog # AP69359

## Product Information

---

<b>Application</b>	WB, IHC-P, IF
<b>Primary Accession</b>	<a href="#">P24864</a>
<b>Reactivity</b>	Human, Mouse, Rat
<b>Host</b>	Rabbit
<b>Clonality</b>	Polyclonal
<b>Calculated MW</b>	47077

## Additional Information

---

<b>Gene ID</b>	898
<b>Other Names</b>	CCNE1; CCNE; G1/S-specific cyclin-E1
<b>Dilution</b>	WB~~Western Blot: 1/500 - 1/2000. Immunohistochemistry: 1/100 - 1/300. Immunofluorescence: 1/200 - 1/1000. ELISA: 1/20000. Not yet tested in other applications. IHC-P~~N/A IF~~1:50~200
<b>Format</b>	Liquid in PBS containing 50% glycerol, 0.5% BSA and 0.09% (W/V) sodium azide.
<b>Storage Conditions</b>	-20°C

## Protein Information

---

<b>Name</b>	CCNE1
<b>Synonyms</b>	CCNE
<b>Function</b>	Essential for the control of the cell cycle at the G1/S (start) transition.
<b>Cellular Location</b>	Nucleus.
<b>Tissue Location</b>	Highly expressed in testis and placenta. Low levels in bronchial epithelial cells.

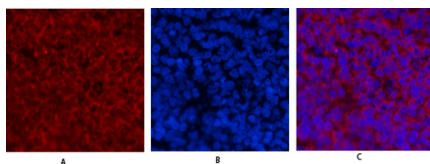
## Background

---

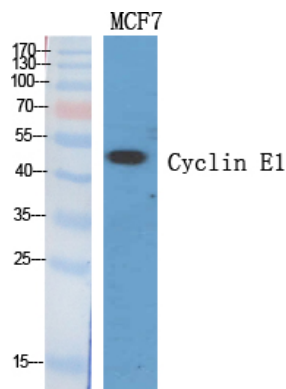
Essential for the control of the cell cycle at the G1/S (start) transition.

## Images

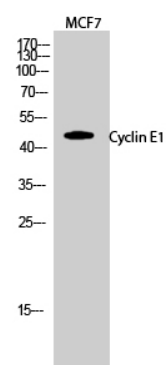
---



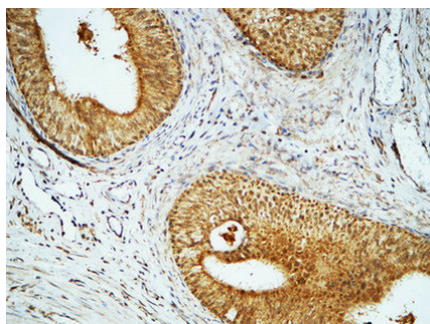
Immunofluorescence analysis of rat-spleen tissue. 1, Cyclin E1 Polyclonal Antibody (red) was diluted at 1:200 (4°C, overnight). 2, Cy3 labeled Secondary antibody was diluted at 1:300 (room temperature, 50 min). 3, Picture B: DAPI (blue) 10 min. Picture A: Target. Picture B: DAPI. Picture C: merge of A+B



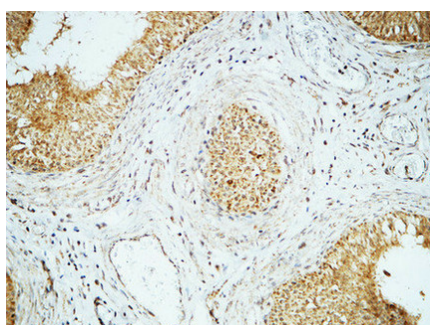
Western Blot analysis of various cells using Cyclin E1 Polyclonal Antibody diluted at 1 : 500



Western Blot analysis of MCF7 cells using Cyclin E1 Polyclonal Antibody diluted at 1 : 500

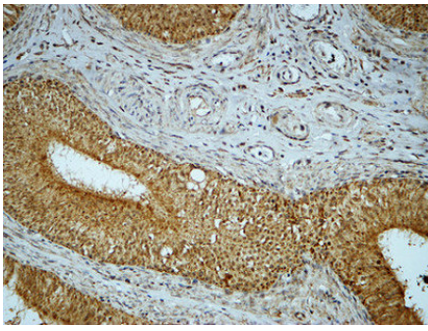


Immunohistochemical analysis of paraffin-embedded Human testis. 1, Antibody was diluted at 1:200 (4°C, overnight). 2, High-pressure and temperature EDTA, pH 8.0 was used for antigen retrieval. 3, Secondary antibody was diluted at 1:200 (room temperature, 30 min).



Immunohistochemical analysis of paraffin-embedded Human testis. 1, Antibody was diluted at 1:200 (4°C, overnight). 2, High-pressure and temperature EDTA, pH 8.0 was used for antigen retrieval. 3, Secondary antibody was diluted at 1:200 (room temperature, 30 min).

Immunohistochemical analysis of paraffin-embedded Human testis. 1, Antibody was diluted at 1:200 (4°C, overnight). 2, High-pressure and temperature EDTA, pH 8.0 was used for antigen retrieval. 3, Secondary antibody was diluted at 1:200 (room temperature, 30 min).



Please note: All products are 'FOR RESEARCH USE ONLY. NOT FOR USE IN DIAGNOSTIC OR THERAPEUTIC PROCEDURES'.