

Cyclin F Polyclonal Antibody

Catalog # AP69363

Product Information

Application	WB, IHC-P
Primary Accession	P41002
Reactivity	Human
Host	Rabbit
Clonality	Polyclonal
Calculated MW	87640

Additional Information

Gene ID	899
Other Names	CCNF; FBX1; FBXO1; Cyclin-F; F-box only protein 1
Dilution	WB~~Western Blot: 1/500 - 1/2000. Immunohistochemistry: 1/100 - 1/300. ELISA: 1/10000. Not yet tested in other applications. IHC-P~~N/A
Format	Liquid in PBS containing 50% glycerol, 0.5% BSA and 0.09% (W/V) sodium azide.
Storage Conditions	-20°C

Protein Information

Name	CCNF
Synonyms	FBX1, FBXO1
Function	<p>Substrate recognition component of a SCF (SKP1-CUL1-F-box protein) E3 ubiquitin-protein ligase complex which mediates the ubiquitination and subsequent proteasomal degradation of target proteins (PubMed:20596027, PubMed:22632967, PubMed:26818844, PubMed:27080313, PubMed:27653696, PubMed:28852778). The SCF(CCNF) E3 ubiquitin-protein ligase complex is an integral component of the ubiquitin proteasome system (UPS) and links proteasome degradation to the cell cycle (PubMed:20596027, PubMed:26818844, PubMed:27653696, PubMed:8706131). Mediates the substrate recognition and the proteasomal degradation of various target proteins involved in the regulation of cell cycle progression and in the maintenance of genome stability (PubMed:20596027, PubMed:22632967, PubMed:26818844, PubMed:27653696). Mediates the ubiquitination and proteasomal degradation of CP110 during G2 phase, thereby acting as an inhibitor of centrosome reduplication (PubMed:20596027). In G2, mediates the ubiquitination and subsequent degradation of ribonucleotide reductase RRM2, thereby maintaining a balanced pool of dNTPs and genome integrity</p>

(PubMed:[22632967](#)). In G2, mediates the ubiquitination and proteasomal degradation of CDC6, thereby suppressing DNA re-replication and preventing genome instability (PubMed:[26818844](#)). Involved in the ubiquitination and degradation of the substrate adapter CDH1 of the anaphase-promoting complex (APC/C), thereby acting as an antagonist of APC/C in regulating G1 progression and S phase entry (PubMed:[27653696](#)). May play a role in the G2 cell cycle checkpoint control after DNA damage, possibly by promoting the ubiquitination of MYBL2/BMYB (PubMed:[25557911](#)).

Cellular Location

Nucleus. Cytoplasm, perinuclear region. Cytoplasm, cytoskeleton, microtubule organizing center, centrosome, centriole Note=Localization to the centrosome is rare in S phase cells and increases in G2 cells. Localizes to both the mother and daughter centrioles. Localization to centrosomes is not dependent on CP110 Localizes to the nucleus in G2 phase.

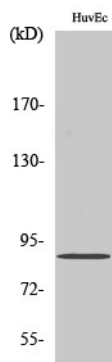
Tissue Location

Widely expressed, with expression detected in the heart, brain, placenta, lung, liver, skeletal muscle, kidney and pancreas.

Background

Substrate recognition component of a SCF (SKP1-CUL1-F-box protein) E3 ubiquitin-protein ligase complex which mediates the ubiquitination and subsequent proteasomal degradation of CP110 during G2 phase, thereby acting as an inhibitor of centrosome reduplication.

Images



Western Blot analysis of various cells using Cyclin F Polyclonal Antibody diluted at 1 : 500 cells nucleus extracted by Minute TM Cytoplasmic and Nuclear Fractionation kit (SC-003, Invent biotech, MN, USA).

Please note: All products are 'FOR RESEARCH USE ONLY. NOT FOR USE IN DIAGNOSTIC OR THERAPEUTIC PROCEDURES'.