

# Cyclin L1 Polyclonal Antibody

Catalog # AP69366

## Product Information

---

Application	WB, IHC-P
Primary Accession	<a href="#">Q9UK58</a>
Reactivity	Human, Mouse, Rat
Host	Rabbit
Clonality	Polyclonal
Calculated MW	59634

## Additional Information

---

Gene ID	57018
Other Names	CCNL1; BM-001; Cyclin-L1; Cyclin-L
Dilution	WB~~Western Blot: 1/500 - 1/2000. Immunohistochemistry: 1/100 - 1/300. ELISA: 1/10000. Not yet tested in other applications. IHC-P~~Western Blot: 1/500 - 1/2000. Immunohistochemistry: 1/100 - 1/300. ELISA: 1/10000. Not yet tested in other applications.
Format	Liquid in PBS containing 50% glycerol, 0.5% BSA and 0.09% (W/V) sodium azide.
Storage Conditions	-20°C

## Protein Information

---

Name	CCNL1
Function	Involved in pre-mRNA splicing. Functions in association with cyclin-dependent kinases (CDKs) (PubMed: <a href="#">18216018</a> ). Inhibited by the CDK-specific inhibitor CDKN1A/p21 (PubMed: <a href="#">11980906</a> ). May play a role in the regulation of RNA polymerase II (pol II). May be a candidate proto-oncogene in head and neck squamous cell carcinomas (HNSCC) (PubMed: <a href="#">12414649</a> , PubMed: <a href="#">15700036</a> ).
Cellular Location	Nucleus speckle. Nucleus, nucleoplasm. Note=Found in nuclear intrachromatin granules clusters (IGC), also called nuclear speckles, which are storage compartments for nuclear proteins involved in mRNA processing.
Tissue Location	Widely expressed. Overexpression in primary tumors of head and neck squamous cell carcinomas (HNSCC)

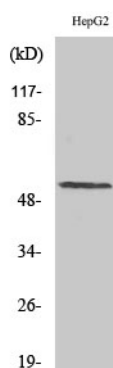
## Background

---

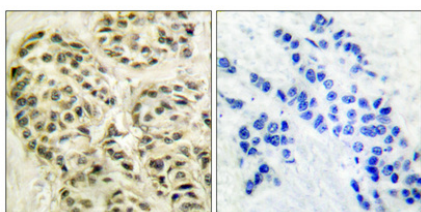
Involved in pre-mRNA splicing. Functions in association with cyclin-dependent kinases (CDKs) (PubMed:[18216018](#)). Inhibited by the CDK-specific inhibitor CDKN1A/p21 (PubMed:[11980906](#)). May play a role in the regulation of RNA polymerase II (pol II). May be a candidate proto-oncogene in head and neck squamous cell carcinomas (HNSCC) (PubMed:[12414649](#), PubMed:[15700036](#)).

## Images

---



Western Blot analysis of various cells using Cyclin L1 Polyclonal Antibody diluted at 1 : 1000 cells nucleus extracted by Minute TM Cytoplasmic and Nuclear Fractionation kit (SC-003, Invent biotech, MN, USA).



Immunohistochemical analysis of paraffin-embedded Human breast cancer. Antibody was diluted at 1:100(4°, overnight). High-pressure and temperature Tris-EDTA, pH8.0 was used for antigen retrieval. Negative control (right) obtained from antibody was pre-absorbed by immunogen peptide.

Please note: All products are 'FOR RESEARCH USE ONLY. NOT FOR USE IN DIAGNOSTIC OR THERAPEUTIC PROCEDURES'.