

CYP2A6 Polyclonal Antibody

Catalog # AP69387

Product Information

Application	WB, IF
Primary Accession	P11509
Reactivity	Human
Host	Rabbit
Clonality	Polyclonal
Calculated MW	56517

Additional Information

Gene ID	1548
Other Names	CYP2A6; CYP2A3; Cytochrome P450 2A6; 1; 4-cineole 2-exo-monooxygenase; CYP2A6; Coumarin 7-hydroxylase; Cytochrome P450 2A6; Cytochrome P450(I)
Dilution	WB~~Western Blot: 1/500 - 1/2000. Immunofluorescence: 1/200 - 1/1000. ELISA: 1/20000. Not yet tested in other applications. IF~~1:50~200
Format	Liquid in PBS containing 50% glycerol, 0.5% BSA and 0.09% (W/V) sodium azide.
Storage Conditions	-20°C

Protein Information

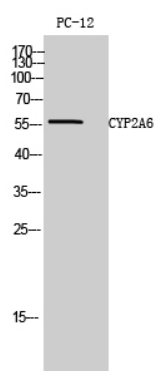
Name	CYP2A6
Synonyms	CYP2A3
Function	Exhibits a high coumarin 7-hydroxylase activity. Can act in the hydroxylation of the anti-cancer drugs cyclophosphamide and ifosfamide. Competent in the metabolic activation of aflatoxin B1. Constitutes the major nicotine C-oxidase. Acts as a 1,4-cineole 2-exo- monooxygenase. Possesses low phenacetin O-deethylation activity.
Cellular Location	Endoplasmic reticulum membrane; Peripheral membrane protein. Microsome membrane; Peripheral membrane protein
Tissue Location	Liver.

Background

Exhibits a high coumarin 7-hydroxylase activity. Can act in the hydroxylation of the anti-cancer drugs

cyclophosphamide and ifosphamide. Competent in the metabolic activation of aflatoxin B1. Constitutes the major nicotine C-oxidase. Acts as a 1,4- cineole 2-exo-monooxygenase. Possesses low phenacetin O-deethylation activity.

Images



Western Blot analysis of PC-12 cells using CYP2A6
Polyclonal Antibody diluted at 1 : 1000

Please note: All products are 'FOR RESEARCH USE ONLY. NOT FOR USE IN DIAGNOSTIC OR THERAPEUTIC PROCEDURES'.