

# C9orf156 Antibody (C-term)

Affinity Purified Rabbit Polyclonal Antibody (Pab)

Catalog # AP6938b

## Product Information

---

<b>Application</b>	WB, IHC-P, E
<b>Primary Accession</b>	<a href="#">Q9BU70</a>
<b>Other Accession</b>	<a href="#">Q4V7E0</a> , <a href="#">Q562D6</a>
<b>Reactivity</b>	Human
<b>Predicted</b>	Mouse, Rat
<b>Host</b>	Rabbit
<b>Clonality</b>	Polyclonal
<b>Isotype</b>	Rabbit IgG
<b>Clone Names</b>	RB21851
<b>Calculated MW</b>	48587
<b>Antigen Region</b>	365-391

## Additional Information

---

<b>Gene ID</b>	51531
<b>Other Names</b>	Nef-associated protein 1, 312-, Thioesterase NAP1, C9orf156, NAP1
<b>Target/Specificity</b>	This C9orf156 antibody is generated from rabbits immunized with a KLH conjugated synthetic peptide between 365-391 amino acids from the C-terminal region of human C9orf156.
<b>Dilution</b>	WB~~1:1000 IHC-P~~1:100~500 E~~Use at an assay dependent concentration.
<b>Format</b>	Purified polyclonal antibody supplied in PBS with 0.09% (W/V) sodium azide. This antibody is purified through a protein A column, followed by peptide affinity purification.
<b>Storage</b>	Maintain refrigerated at 2-8°C for up to 2 weeks. For long term storage store at -20°C in small aliquots to prevent freeze-thaw cycles.
<b>Precautions</b>	C9orf156 Antibody (C-term) is for research use only and not for use in diagnostic or therapeutic procedures.

## Protein Information

---

<b>Name</b>	TRMO {ECO:0000303   PubMed:25063302, ECO:0000312   HGNC:HGNC:30967}
<b>Function</b>	S-adenosyl-L-methionine-dependent methyltransferase responsible for the addition of the methyl group in the formation of N6-methyl-N6-threonylcarbamoyladenosine at position 37 (m(6)t(6)A37) of

the tRNA anticodon loop of tRNA(Ser)(GCU) (PubMed:[25063302](#)). The methyl group of m(6)t(6)A37 may improve the efficiency of the tRNA decoding ability (By similarity).

## Background

---

C9orf156 hydrolyzes acyl-CoA thioesters (in vitro). It has a preference for substrates with medium chain length (C10-C14). Inactive towards substrates with C18 or C20 aliphatic chains. Its physiological function is not known.

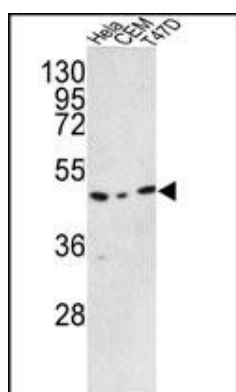
## References

---

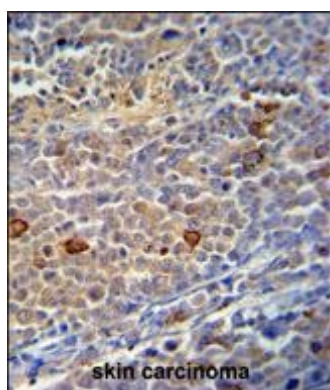
Moreno,L.M., et.al., Hum. Mol. Genet. 18 (24), 4879-4896 (2009)

## Images

---



Western blot analysis of C9orf156 Antibody (C-term) (Cat. #AP6938b) in HeLa, CEM, T47D cell line lysates (35ug/lane). C9orf156 (arrow) was detected using the purified Pab.



C9orf156 Antibody (C-term) (Cat. #AP6938b) immunohistochemistry analysis in formalin fixed and paraffin embedded human skin carcinoma followed by peroxidase conjugation of the secondary antibody and DAB staining. This data demonstrates the use of the C9orf156 Antibody (C-term) for immunohistochemistry. Clinical relevance has not been evaluated.

Please note: All products are 'FOR RESEARCH USE ONLY. NOT FOR USE IN DIAGNOSTIC OR THERAPEUTIC PROCEDURES'.