

# CYP2B6 Polyclonal Antibody

Catalog # AP69391

## Product Information

---

Application	WB
Primary Accession	<a href="#">P20813</a>
Reactivity	Human
Host	Rabbit
Clonality	Polyclonal
Calculated MW	56278

## Additional Information

---

Gene ID	1555
Other Names	CYP2B6; Cytochrome P450 2B6; 1; 4-cineole 2-exo-monooxygenase; CYP11B6; Cytochrome P450 IIB1
Dilution	WB--Western Blot: 1/500 - 1/2000. ELISA: 1/40000. Not yet tested in other applications.
Format	Liquid in PBS containing 50% glycerol, 0.5% BSA and 0.09% (W/V) sodium azide.
Storage Conditions	-20°C

## Protein Information

---

Name	CYP2B6 {ECO:0000303   PubMed:21289075, ECO:0000312   HGNC:HGNC:2615}
Function	<p>A cytochrome P450 monooxygenase involved in the metabolism of endocannabinoids and steroids (PubMed:<a href="#">12865317</a>, PubMed:<a href="#">21289075</a>). Mechanistically, uses molecular oxygen inserting one oxygen atom into a substrate, and reducing the second into a water molecule, with two electrons provided by NADPH via cytochrome P450 reductase (NADPH-- hemoprotein reductase). Catalyzes the epoxidation of double bonds of arachidonoyl ethanolamide (anandamide) to 8,9-, 11,12-, and 14,15- epoxyeicosatrienoic acid ethanolamides (EpETE-EAs), potentially modulating endocannabinoid system signaling (PubMed:<a href="#">21289075</a>). Hydroxylates steroid hormones, including testosterone at C-16 and estrogens at C-2 (PubMed:<a href="#">12865317</a>, PubMed:<a href="#">21289075</a>). Plays a role in the oxidative metabolism of xenobiotics, including plant lipids and drugs (PubMed:<a href="#">11695850</a>, PubMed:<a href="#">22909231</a>). Acts as a 1,4-cineole 2-exo-monooxygenase (PubMed:<a href="#">11695850</a>).</p>
Cellular Location	Endoplasmic reticulum membrane; Peripheral membrane protein. Microsome

membrane; Peripheral membrane protein

## Tissue Location

Expressed in liver, lung and heart right ventricle.

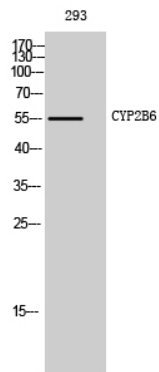
## Background

---

Cytochromes P450 are a group of heme-thiolate monooxygenases. In liver microsomes, this enzyme is involved in an NADPH-dependent electron transport pathway. It oxidizes a variety of structurally unrelated compounds, including steroids, fatty acids, and xenobiotics. Acts as a 1,4-cineole 2-exo-monooxygenase.

## Images

---



Western Blot analysis of 293 cells using CYP2B6 Polyclonal Antibody

Please note: All products are 'FOR RESEARCH USE ONLY. NOT FOR USE IN DIAGNOSTIC OR THERAPEUTIC PROCEDURES'.