

Cystatin B Polyclonal Antibody

Catalog # AP69433

Product Information

Application	WB, IHC-P, IF
Primary Accession	P04080
Reactivity	Human, Rat
Host	Rabbit
Clonality	Polyclonal
Calculated MW	11140

Additional Information

Gene ID	1476
Other Names	CSTB; CST6; STFB; Cystatin-B; CPI-B; Liver thiol proteinase inhibitor; Stefin-B
Dilution	WB~~Western Blot: 1/500 - 1/2000. Immunohistochemistry: 1/100 - 1/300. Immunofluorescence: 1/200 - 1/1000. ELISA: 1/20000. Not yet tested in other applications. IHC-P~~N/A IF~~1:50~200
Format	Liquid in PBS containing 50% glycerol, 0.5% BSA and 0.09% (W/V) sodium azide.
Storage Conditions	-20°C

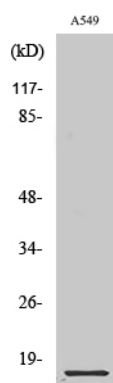
Protein Information

Name	CSTB
Synonyms	CST6, STFB
Function	This is an intracellular thiol proteinase inhibitor. Tightly binding reversible inhibitor of cathepsins L, H and B.
Cellular Location	Cytoplasm. Nucleus

Background

This is an intracellular thiol proteinase inhibitor. Tightly binding reversible inhibitor of cathepsins L, H and B.

Images



Western Blot analysis of various cells using Cystatin B
Polyclonal Antibody diluted at 1 : 1000

Please note: All products are 'FOR RESEARCH USE ONLY. NOT FOR USE IN DIAGNOSTIC OR THERAPEUTIC PROCEDURES'.