

Cystatin SN Polyclonal Antibody

Catalog # AP69438

Product Information

Application	WB, IHC-P, IF
Primary Accession	P01037
Reactivity	Human
Host	Rabbit
Clonality	Polyclonal
Calculated MW	16388

Additional Information

Gene ID	1469
Other Names	CST1; Cystatin-SN; Cystatin-SA-I; Cystatin-1; Salivary cystatin-SA-1
Dilution	WB~~Immunohistochemistry: 1/100 - 1/300. Immunofluorescence: 1/200 - 1/1000. ELISA: 1/20000. Not yet tested in other applications. IHC-P~~N/A IF~~1:50~200
Format	Liquid in PBS containing 50% glycerol, 0.5% BSA and 0.09% (W/V) sodium azide.
Storage Conditions	-20°C

Protein Information

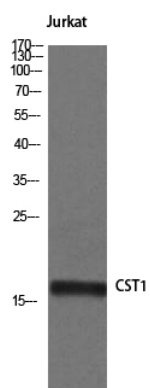
Name	CST1
Function	Human saliva appears to contain several cysteine proteinase inhibitors that are immunologically related to cystatin S but that differ in their specificity due to amino acid sequence differences. Cystatin SN, with a pI of 7.5, is a much better inhibitor of papain and dipeptidyl peptidase I than is cystatin S, although both inhibit ficin equally well.
Cellular Location	Secreted.
Tissue Location	Expressed in submandibular and sublingual saliva but not in parotid saliva (at protein level). Expressed in saliva, tears, urine and seminal fluid.

Background

Human saliva appears to contain several cysteine proteinase inhibitors that are immunologically related to cystatin S but that differ in their specificity due to amino acid sequence differences. Cystatin SN, with a pI of 7.5, is a much better inhibitor of papain and dipeptidyl peptidase I than is cystatin S, although both inhibit

ficin equally well.

Images



Western Blot analysis of Jurkat cells using Cystatin SN Polyclonal Antibody

Please note: All products are 'FOR RESEARCH USE ONLY. NOT FOR USE IN DIAGNOSTIC OR THERAPEUTIC PROCEDURES'.