

# Cytochrome b5 Polyclonal Antibody

Catalog # AP69440

## Product Information

---

<b>Application</b>	WB, IHC-P, IF
<b>Primary Accession</b>	<a href="#">P00167</a>
<b>Reactivity</b>	Human, Mouse, Rat
<b>Host</b>	Rabbit
<b>Clonality</b>	Polyclonal
<b>Calculated MW</b>	15330

## Additional Information

---

<b>Gene ID</b>	1528
<b>Other Names</b>	CYB5A; CYB5; Cytochrome b5; Microsomal cytochrome b5 type A; MCB5
<b>Dilution</b>	WB~~Western Blot: 1/500 - 1/2000. Immunohistochemistry: 1/100 - 1/300. Immunofluorescence: 1/200 - 1/1000. ELISA: 1/5000. Not yet tested in other applications. IHC-P~~N/A IF~~1:50~200
<b>Format</b>	Liquid in PBS containing 50% glycerol, 0.5% BSA and 0.09% (W/V) sodium azide.
<b>Storage Conditions</b>	-20°C

## Protein Information

---

<b>Name</b>	CYB5A
<b>Synonyms</b>	CYB5
<b>Function</b>	Cytochrome b5 is a membrane-bound hemoprotein functioning as an electron carrier for several membrane-bound oxygenases.
<b>Cellular Location</b>	[Isoform 1]: Endoplasmic reticulum membrane; Single-pass membrane protein; Cytoplasmic side. Microsome membrane; Single-pass membrane protein; Cytoplasmic side

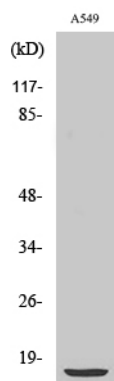
## Background

---

Cytochrome b5 is a membrane bound hemoprotein which function as an electron carrier for several membrane bound oxygenases.

## Images

---



Western Blot analysis of various cells using Cytochrome b5 Polyclonal Antibody

Please note: All products are 'FOR RESEARCH USE ONLY. NOT FOR USE IN DIAGNOSTIC OR THERAPEUTIC PROCEDURES'.