

Cytokeratin 13 Polyclonal Antibody

Catalog # AP69443

Product Information

Application	WB, IHC-P
Primary Accession	P13646
Reactivity	Human, Mouse, Rat
Host	Rabbit
Clonality	Polyclonal
Calculated MW	49588

Additional Information

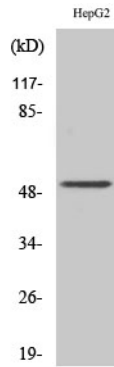
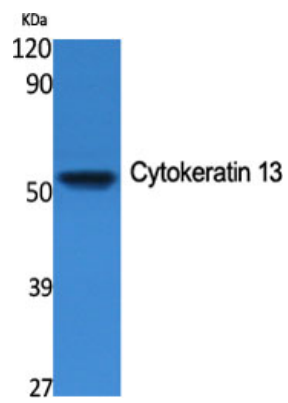
Gene ID	3860
Other Names	KRT13; Keratin; type I cytoskeletal 13; Cytokeratin-13; CK-13; Keratin-13; K13
Dilution	WB~~Western Blot: 1/500 - 1/2000. Immunohistochemistry: 1/100 - 1/300. ELISA: 1/5000. Not yet tested in other applications. IHC-P~~N/A
Format	Liquid in PBS containing 50% glycerol, 0.5% BSA and 0.09% (W/V) sodium azide.
Storage Conditions	-20°C

Protein Information

Name	KRT13
Function	Type 1 keratin (Probable). Maintains postnatal tongue mucosal cell homeostasis and tissue organization in response to mechanical stress, potentially via regulation of the G1/S phase cyclins CCNE1 and CCNE2 (By similarity).
Tissue Location	Expressed in some epidermal sweat gland ducts (at protein level) and in exocervix, esophagus and placenta

Images

Western Blot analysis of various cells using Cytokeratin 13 Polyclonal Antibody



Western Blot analysis of HepG2 cells using Cytokeratin 13 Polyclonal Antibody

Please note: All products are 'FOR RESEARCH USE ONLY. NOT FOR USE IN DIAGNOSTIC OR THERAPEUTIC PROCEDURES'.