

Cytokeratin 15 Polyclonal Antibody

Catalog # AP69446

Product Information

Application	WB, IHC-P
Primary Accession	P19012
Reactivity	Human, Mouse, Rat, Monkey
Host	Rabbit
Clonality	Polyclonal
Calculated MW	49212

Additional Information

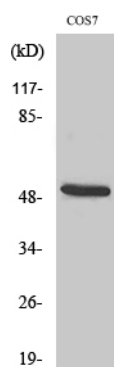
Gene ID	3866
Other Names	KRT15; KRTB; Keratin; type I cytoskeletal 15; Cytokeratin-15; CK-15; Keratin-15; K15
Dilution	WB~~Western Blot: 1/500 - 1/2000. Immunohistochemistry: 1/100 - 1/300. ELISA: 1/20000. Not yet tested in other applications. IHC-P~~N/A
Format	Liquid in PBS containing 50% glycerol, 0.5% BSA and 0.09% (W/V) sodium azide.
Storage Conditions	-20°C

Protein Information

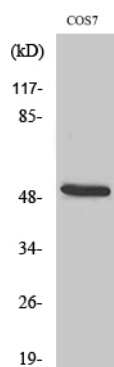
Name	KRT15
Synonyms	KRTB
Tissue Location	Expressed in a discontinuous manner in the basal cell layer of adult skin epidermis, but continuously in the basal layer of fetal skin epidermis and nail. Also expressed in the outer root sheath above the hair bulb in hair follicle (at protein level) Expressed homogeneously in all cell layers of the esophagus and exocervix, but detected in the basal cell layer only of oral mucosa, skin and in the basal plus the next two layers of the suprabasal epithelium of the palate.

Images

Western Blot analysis of various cells using Cytokeratin 15 Polyclonal Antibody



Western Blot analysis of COS7 cells using Cytokeratin 15 Polyclonal Antibody



Please note: All products are 'FOR RESEARCH USE ONLY. NOT FOR USE IN DIAGNOSTIC OR THERAPEUTIC PROCEDURES'.