

Cytokeratin 20 Polyclonal Antibody

Catalog # AP69453

Product Information

Application	WB, IHC-P, IF
Primary Accession	P35900
Reactivity	Human, Mouse, Rat
Host	Rabbit
Clonality	Polyclonal
Calculated MW	48487

Additional Information

Gene ID	54474
Other Names	KRT20; Keratin; type I cytoskeletal 20; Cytokeratin-20; CK-20; Keratin-20; K20; Protein IT
Dilution	WB~~Western Blot: 1/500 - 1/2000. Immunohistochemistry: 1/100 - 1/300. Immunofluorescence: 1/200 - 1/1000. ELISA: 1/10000. Not yet tested in other applications. IHC-P~~N/A IF~~1:50~200
Format	Liquid in PBS containing 50% glycerol, 0.5% BSA and 0.09% (W/V) sodium azide.
Storage Conditions	-20°C

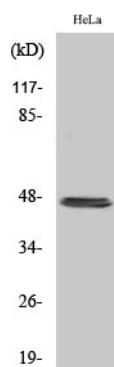
Protein Information

Name	KRT20
Function	Plays a significant role in maintaining keratin filament organization in intestinal epithelia. When phosphorylated, plays a role in the secretion of mucin in the small intestine (By similarity).
Cellular Location	Cytoplasm
Tissue Location	Expressed predominantly in the intestinal epithelium. Expressed in luminal cells of colonic mucosa. Also expressed in the Merkel cells of keratinized oral mucosa; specifically at the tips of some rete ridges of the gingival mucosa, in the basal layer of the palatal mucosa and in the taste buds of lingual mucosa

Background

Plays a significant role in maintaining keratin filament organization in intestinal epithelia. When phosphorylated, plays a role in the secretion of mucin in the small intestine (By similarity).

Images



Western Blot analysis of various cells using Cytokeratin 20
Polyclonal Antibody diluted at 1 : 500

Please note: All products are 'FOR RESEARCH USE ONLY. NOT FOR USE IN DIAGNOSTIC OR THERAPEUTIC PROCEDURES'.