

# Cytokeratin 5 Polyclonal Antibody

Catalog # AP69454

## Product Information

---

<b>Application</b>	WB, IHC-P, IF
<b>Primary Accession</b>	<a href="#">P13647</a>
<b>Reactivity</b>	Human, Mouse, Rat
<b>Host</b>	Rabbit
<b>Clonality</b>	Polyclonal
<b>Calculated MW</b>	62378

## Additional Information

---

<b>Gene ID</b>	3852
<b>Other Names</b>	KRT5; Keratin; type II cytoskeletal 5; 58 kDa cytokeratin; Cytokeratin-5; CK-5; Keratin-5; K5; Type-II keratin Kb5
<b>Dilution</b>	WB~~Western Blot: 1/500 - 1/2000. Immunohistochemistry: 1/100 - 1/300. Immunofluorescence: 1/200 - 1/1000. ELISA: 1/10000. Not yet tested in other applications. IHC-P~~N/A IF~~1:50~200
<b>Format</b>	Liquid in PBS containing 50% glycerol, 0.5% BSA and 0.09% (W/V) sodium azide.
<b>Storage Conditions</b>	-20°C

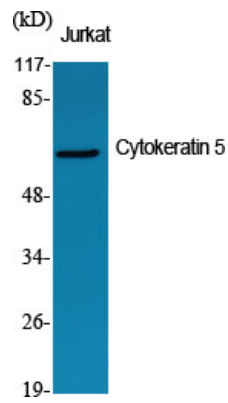
## Protein Information

---

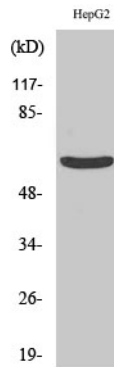
<b>Name</b>	KRT5
<b>Function</b>	Required for the formation of keratin intermediate filaments in the basal epidermis and maintenance of the skin barrier in response to mechanical stress (By similarity). Regulates the recruitment of Langerhans cells to the epidermis, potentially by modulation of the abundance of macrophage chemotactic cytokines, macrophage inflammatory cytokines and CTNND1 localization in keratinocytes (By similarity).
<b>Cellular Location</b>	Cytoplasm.
<b>Tissue Location</b>	Expressed in corneal epithelium (at protein level) (PubMed:26758872). Expressed in keratinocytes (at protein level) (PubMed:20128788, PubMed:31302245).

## Images

---



Western Blot analysis of various cells using Cytokeratin 5 Polyclonal Antibody diluted at 1 : 1000



Western Blot analysis of HepG2 cells using Cytokeratin 5 Polyclonal Antibody diluted at 1 : 1000

Please note: All products are 'FOR RESEARCH USE ONLY. NOT FOR USE IN DIAGNOSTIC OR THERAPEUTIC PROCEDURES'.