

# Cytokeratin 7 Polyclonal Antibody

Catalog # AP69455

## Product Information

---

<b>Application</b>	WB, IHC-P, IF
<b>Primary Accession</b>	<a href="#">P08729</a>
<b>Reactivity</b>	Human
<b>Host</b>	Rabbit
<b>Clonality</b>	Polyclonal
<b>Calculated MW</b>	51386

## Additional Information

---

<b>Gene ID</b>	3855
<b>Other Names</b>	KRT7; SCL; Keratin; type II cytoskeletal 7; Cytokeratin-7; CK-7; Keratin-7; K7; Sarcolectin; Type-II keratin Kb7
<b>Dilution</b>	WB~~Western Blot: 1/500 - 1/2000. Immunohistochemistry: 1/100 - 1/300. Immunofluorescence: 1/200 - 1/1000. ELISA: 1/40000. Not yet tested in other applications. IHC-P~~N/A IF~~1:50~200
<b>Format</b>	Liquid in PBS containing 50% glycerol, 0.5% BSA and 0.09% (W/V) sodium azide.
<b>Storage Conditions</b>	-20°C

## Protein Information

---

<b>Name</b>	KRT7
<b>Synonyms</b>	SCL
<b>Function</b>	Blocks interferon-dependent interphase and stimulates DNA synthesis in cells. Involved in the translational regulation of the human papillomavirus type 16 E7 mRNA (HPV16 E7).
<b>Cellular Location</b>	Cytoplasm.
<b>Tissue Location</b>	Expressed in cultured epidermal, bronchial and mesothelial cells but absent in colon, ectocervix and liver. Observed throughout the glandular cells in the junction between stomach and esophagus but is absent in the esophagus.

## Background

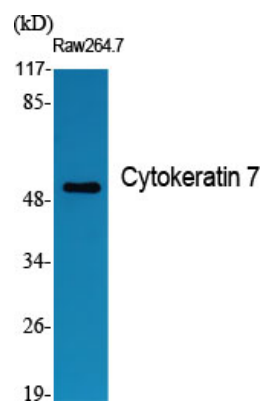
---

Blocks interferon-dependent interphase and stimulates DNA synthesis in cells. Involved in the translational

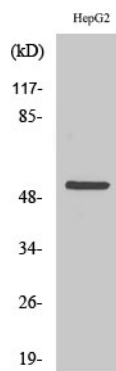


regulation of the human papillomavirus type 16 E7 mRNA (HPV16 E7).

Images



Western Blot analysis of various cells using Cytokeratin 7  
Polyclonal Antibody diluted at 1 : 1000



Western Blot analysis of HepG2 cells using Cytokeratin 7  
Polyclonal Antibody diluted at 1 : 1000

Please note: All products are 'FOR RESEARCH USE ONLY. NOT FOR USE IN DIAGNOSTIC OR THERAPEUTIC PROCEDURES'.