

# D55 Polyclonal Antibody

Catalog # AP69463

## Product Information

<b>Application</b>	IHC-P
<b>Primary Accession</b>	<a href="#">Q96J77</a>
<b>Reactivity</b>	Human
<b>Host</b>	Rabbit
<b>Clonality</b>	Polyclonal
<b>Calculated MW</b>	15503

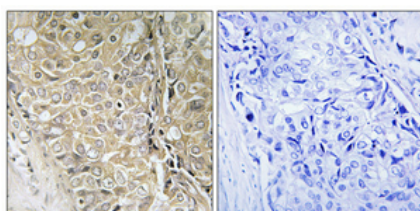
## Additional Information

<b>Gene ID</b>	89882
<b>Other Names</b>	TPD52L3; Tumor protein D55; hD55; Testis development protein NYD-SP25; Tumor protein D52-like 3
<b>Dilution</b>	IHC-P~~Immunohistochemistry: 1/100 - 1/300. ELISA: 1/20000. Not yet tested in other applications.
<b>Format</b>	Liquid in PBS containing 50% glycerol, 0.5% BSA and 0.09% (W/V) sodium azide.
<b>Storage Conditions</b>	-20°C

## Protein Information

<b>Name</b>	TPD52L3
<b>Tissue Location</b>	Specifically expressed in testis. Expressed at 5.6- fold higher levels in adult testis than in fetal testis

## Images



Immunohistochemical analysis of paraffin-embedded Human prostate cancer. Antibody was diluted at 1:100(4°,overnight). High-pressure and temperature Tris-EDTA,pH8.0 was used for antigen retrieval. Negative contrl (right) obtained from antibody was pre-absorbed by immunogen peptide.

Please note: All products are 'FOR RESEARCH USE ONLY. NOT FOR USE IN DIAGNOSTIC OR THERAPEUTIC PROCEDURES'.