

DCAMKL2 Polyclonal Antibody

Catalog # AP69481

Product Information

Application	WB, IF
Primary Accession	Q8N568
Reactivity	Human, Mouse
Host	Rabbit
Clonality	Polyclonal
Calculated MW	83606

Additional Information

Gene ID	166614
Other Names	DCLK2; DCAMKL2; DCDC3B; DCK2; Serine/threonine-protein kinase DCLK2; CaMK-like CREB regulatory kinase 2; CL2; CLICK-II; CLICK2; Doublecortin domain-containing protein 3B; Doublecortin-like and CAM kinase-like 2; Doublecortin-like kinase 2
Dilution	WB~~Western Blot: 1/500 - 1/2000. Immunofluorescence: 1/200 - 1/1000. ELISA: 1/10000. Not yet tested in other applications. IF~~1:50~200
Format	Liquid in PBS containing 50% glycerol, 0.5% BSA and 0.09% (W/V) sodium azide.
Storage Conditions	-20°C

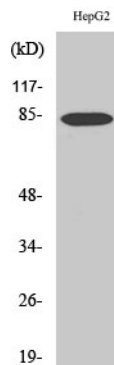
Protein Information

Name	DCLK2
Synonyms	DCAMKL2, DCDC3B, DCK2
Function	Protein kinase with a significantly reduced C(a2+)/CAM affinity and dependence compared to other members of the CaMK family. May play a role in the down-regulation of CRE-dependent gene activation probably by phosphorylation of the CREB coactivator CRTC2/TORC2 and the resulting retention of TORC2 in the cytoplasm (By similarity).
Cellular Location	Cytoplasm, cytoskeleton. Note=Colocalizes with microtubules.
Tissue Location	Expressed in the brain, heart and eyes.

Background

Protein kinase with a significantly reduced C(a²⁺)/CAM affinity and dependence compared to other members of the CaMK family. May play a role in the down-regulation of CRE-dependent gene activation probably by phosphorylation of the CREB coactivator CRTC2/TORC2 and the resulting retention of TORC2 in the cytoplasm (By similarity).

Images



Western Blot analysis of various cells using DCAMKL2 Polyclonal Antibody

Please note: All products are 'FOR RESEARCH USE ONLY. NOT FOR USE IN DIAGNOSTIC OR THERAPEUTIC PROCEDURES'.