

DnaJB4 Polyclonal Antibody

Catalog # AP69562

Product Information

Application	WB, IHC-P
Primary Accession	Q9UDY4
Reactivity	Human, Mouse, Rat
Host	Rabbit
Clonality	Polyclonal
Calculated MW	37807

Additional Information

Gene ID	11080
Other Names	DNAJB4; DNAJW; HLJ1; DnaJ homolog subfamily B member 4; Heat shock 40 kDa protein 1 homolog; HSP40 homolog; Heat shock protein 40 homolog; Human liver DnaJ-like protein
Dilution	WB~~Western Blot: 1/500 - 1/2000. Immunohistochemistry: 1/100 - 1/300. ELISA: 1/40000. Not yet tested in other applications. IHC-P~~Western Blot: 1/500 - 1/2000. Immunohistochemistry: 1/100 - 1/300. ELISA: 1/40000. Not yet tested in other applications.
Format	Liquid in PBS containing 50% glycerol, 0.5% BSA and 0.09% (W/V) sodium azide.
Storage Conditions	-20°C

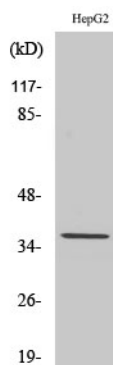
Protein Information

Name	DNAJB4
Synonyms	DNAJW, HLJ1
Function	Probable chaperone. Stimulates ATP hydrolysis and the folding of unfolded proteins mediated by HSPA1A/B (in vitro) (PubMed: 24318877).
Cellular Location	Cytoplasm. Cell membrane. Cytoplasm, myofibril, sarcomere, Z line. Note=Cytoplasmic according to PubMed:18837411 and membrane-associated according to PubMed:16542645
Tissue Location	Expressed in heart, pancreas and skeletal muscle, and to a lesser extent in brain, placenta and liver

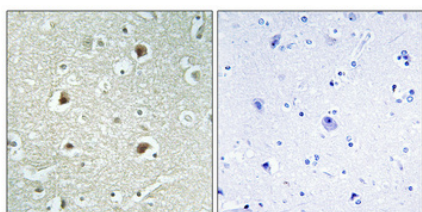
Background

Probable chaperone. Stimulates ATP hydrolysis and the folding of unfolded proteins mediated by HSPA1A/B (in vitro) (PubMed:[24318877](#)).

Images



Western Blot analysis of various cells using DnaJB4 Polyclonal Antibody



Immunohistochemical analysis of paraffin-embedded Human brain. Antibody was diluted at 1:100(4°,overnight). High-pressure and temperature Tris-EDTA,pH8.0 was used for antigen retrieval. Negative contrl (right) obtained from antibody was pre-absorbed by immunogen peptide.

Please note: All products are 'FOR RESEARCH USE ONLY. NOT FOR USE IN DIAGNOSTIC OR THERAPEUTIC PROCEDURES'.