

Dok-5 Polyclonal Antibody

Catalog # AP69582

Product Information

Application	WB
Primary Accession	Q9P104
Reactivity	Human, Mouse
Host	Rabbit
Clonality	Polyclonal
Calculated MW	35464

Additional Information

Gene ID	55816
Other Names	DOK5; C20orf180; Docking protein 5; Downstream of tyrosine kinase 5; Insulin receptor substrate 6; IRS-6; IRS6
Dilution	WB~~Western Blot: 1/500 - 1/2000. ELISA: 1/20000. Not yet tested in other applications.
Format	Liquid in PBS containing 50% glycerol, 0.5% BSA and 0.09% (W/V) sodium azide.
Storage Conditions	-20°C

Protein Information

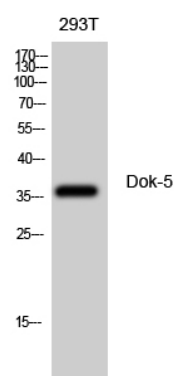
Name	DOK5
Synonyms	C20orf180
Function	DOK proteins are enzymatically inert adaptor or scaffolding proteins. They provide a docking platform for the assembly of multimolecular signaling complexes. DOK5 functions in RET-mediated neurite outgrowth and plays a positive role in activation of the MAP kinase pathway. Putative link with downstream effectors of RET in neuronal differentiation.
Tissue Location	Highest expression in skeletal muscle, lower in brain, heart and kidney. Also detected in activated peripheral blood T- lymphocytes.

Background

DOK proteins are enzymatically inert adaptor or scaffolding proteins. They provide a docking platform for the assembly of multimolecular signaling complexes. DOK5 functions in RET-mediated neurite outgrowth and plays a positive role in activation of the MAP kinase pathway. Putative link with downstream effectors of

RET in neuronal differentiation.

Images



Western Blot analysis of 293T cells using Dok-5 Polyclonal Antibody diluted at 1 : 500

Please note: All products are 'FOR RESEARCH USE ONLY. NOT FOR USE IN DIAGNOSTIC OR THERAPEUTIC PROCEDURES'.