

DPF2 Polyclonal Antibody

Catalog # AP69591

Product Information

Application	WB, IHC-P, IF
Primary Accession	Q92785
Reactivity	Human, Mouse
Host	Rabbit
Clonality	Polyclonal
Calculated MW	44155

Additional Information

Gene ID	5977
Other Names	DPF2; BAF45D; REQ; UBID4; Zinc finger protein ubi-d4; Apoptosis response zinc finger protein; BRG1-associated factor 45D; BAF45D; D4; zinc and double PHD fingers family 2; Protein requiem
Dilution	WB~~Western Blot: 1/500 - 1/2000. Immunohistochemistry: 1/100 - 1/300. Immunofluorescence: 1/200 - 1/1000. ELISA: 1/10000. Not yet tested in other applications. IHC-P~~N/A IF~~1:50~200
Format	Liquid in PBS containing 50% glycerol, 0.5% BSA and 0.09% (W/V) sodium azide.
Storage Conditions	-20°C

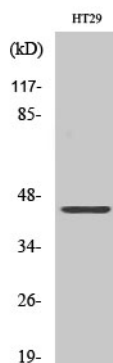
Protein Information

Name	DPF2
Synonyms	BAF45D, REQ, UBID4
Function	Plays an active role in transcriptional regulation by binding modified histones H3 and H4 (PubMed: 27775714 , PubMed: 28533407). Is a negative regulator of myeloid differentiation of hematopoietic progenitor cells (PubMed: 28533407). Might also have a role in the development and maturation of lymphoid cells (By similarity). Involved in the regulation of non-canonical NF-kappa-B pathway (PubMed: 20460684).
Cellular Location	Nucleus. Cytoplasm
Tissue Location	Ubiquitous.

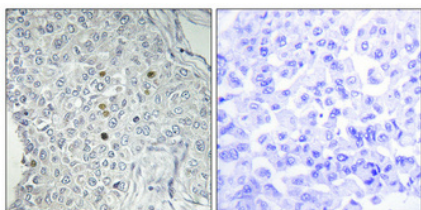
Background

Plays an active role in transcriptional regulation by binding modified histones H3 and H4 (PubMed:[28533407](#), PubMed:[27775714](#)). Is a negative regulator of myeloid differentiation of hematopoietic progenitor cells (PubMed:[28533407](#)). Might also have a role in the development and maturation of lymphoid cells (By similarity). Involved in the regulation of non-canonical NF-kappa-B pathway (PubMed:[20460684](#)).

Images



Western Blot analysis of various cells using DPF2 Polyclonal Antibody



Immunohistochemical analysis of paraffin-embedded Human breast cancer. Antibody was diluted at 1:100(4°,overnight). High-pressure and temperature Tris-EDTA,pH8.0 was used for antigen retrieval. Negative contrl (right) obtaned from antibody was pre-absorbed by immunogen peptide.

Please note: All products are 'FOR RESEARCH USE ONLY. NOT FOR USE IN DIAGNOSTIC OR THERAPEUTIC PROCEDURES'.