

# Dsg1 Polyclonal Antibody

Catalog # AP69600

## Product Information

---

Application	WB
Primary Accession	<a href="#">Q02413</a>
Reactivity	Human, Mouse
Host	Rabbit
Clonality	Polyclonal
Calculated MW	113748

## Additional Information

---

Gene ID	1828
Other Names	DSG1; CDHF4; Desmoglein-1; Cadherin family member 4; Desmosomal glycoprotein 1; DG1; DGI; Pemphigus foliaceus antigen
Dilution	WB~~Western Blot: 1/500 - 1/2000. ELISA: 1/40000. Not yet tested in other applications.
Format	Liquid in PBS containing 50% glycerol, 0.5% BSA and 0.09% (W/V) sodium azide.
Storage Conditions	-20°C

## Protein Information

---

Name	DSG1
Synonyms	CDHF4
Function	Component of intercellular desmosome junctions (PubMed: <a href="#">34368962</a> ). Involved in the interaction of plaque proteins and intermediate filaments mediating cell-cell adhesion (PubMed: <a href="#">19717567</a> ).
Cellular Location	Cell membrane; Single-pass type I membrane protein {ECO:0000250 UniProtKB:Q7TSF1} Cell junction, desmosome. Cytoplasm. Nucleus
Tissue Location	Expressed in all suprabasal layers of the epidermis, with the highest expression seen in the granular layer (at protein level).

## Background

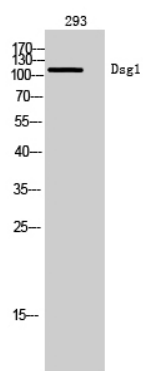
---

Component of intercellular desmosome junctions. Involved in the interaction of plaque proteins and

intermediate filaments mediating cell-cell adhesion.

## Images

---



Western Blot analysis of 293 cells using Dsg1 Polyclonal Antibody

Please note: All products are 'FOR RESEARCH USE ONLY. NOT FOR USE IN DIAGNOSTIC OR THERAPEUTIC PROCEDURES'.