

Dynein LC 1 Polyclonal Antibody

Catalog # AP69614

Product Information

Application	WB, IHC-P
Primary Accession	Q4LDG9
Reactivity	Human, Mouse
Host	Rabbit
Clonality	Polyclonal
Calculated MW	21533

Additional Information

Gene ID	83544
Other Names	DNAL1; C14orf168; Dynein light chain 1; axonemal
Dilution	WB~~Western Blot: 1/500 - 1/2000. Immunohistochemistry: 1/100 - 1/300. ELISA: 1/40000. Not yet tested in other applications. IHC-P~~N/A
Format	Liquid in PBS containing 50% glycerol, 0.5% BSA and 0.09% (W/V) sodium azide.
Storage Conditions	-20°C

Protein Information

Name	DNAL1 (HGNC:23247)
Synonyms	C14orf168
Function	Part of the multisubunit axonemal ATPase complexes that generate the force for cilia motility and govern beat frequency (By similarity). Component of the outer arm dynein (ODA). May be involved in a mechanosensory feedback mechanism controlling ODA activity based on external conformational cues by tethering the outer arm dynein heavy chain (DNAH5) to the microtubule within the axoneme (By similarity). Important for ciliary function in the airways and for the function of the cilia that produce the nodal flow essential for the determination of the left-right asymmetry (PubMed: 21496787).
Cellular Location	Cytoplasm, cytoskeleton, cilium axoneme
Tissue Location	Expressed in tissues carrying motile cilia such as respiratory epithelia, ependyma and testis

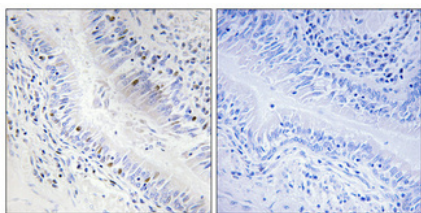
Background

Part of the multisubunit axonemal ATPase complexes that generate the force for cilia motility and govern beat frequency (By similarity). Component of the outer arm dynein (ODA). May be involved in a mechanosensory feedback mechanism controlling ODA activity based on external conformational cues by tethering the outer arm dynein heavy chain (DNAH5) to the microtubule within the axoneme (By similarity). Important for ciliary function in the airways and for the function of the cilia that produce the nodal flow essential for the determination of the left-right asymmetry (PubMed:[21496787](#)).

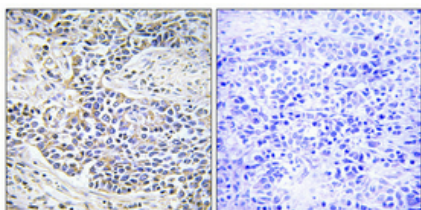
Images



Western Blot analysis of various cells using Dynein LC 1 Polyclonal Antibody diluted at 1 : 500



Immunohistochemical analysis of paraffin-embedded Human lung cancer. Antibody was diluted at 1:100(4°,overnight). High-pressure and temperature Tris-EDTA,pH8.0 was used for antigen retrieval. Negative contrl (right) obtaned from antibody was pre-absorbed by immunogen peptide.



Immunohistochemical analysis of paraffin-embedded Human lung cancer. Antibody was diluted at 1:100(4°,overnight). High-pressure and temperature Tris-EDTA,pH8.0 was used for antigen retrieval. Negative contrl (right) obtaned from antibody was pre-absorbed by immunogen peptide.

Please note: All products are 'FOR RESEARCH USE ONLY. NOT FOR USE IN DIAGNOSTIC OR THERAPEUTIC PROCEDURES'.