

# ECP Polyclonal Antibody

Catalog # AP69639

## Product Information

---

|                          |                        |
|--------------------------|------------------------|
| <b>Application</b>       | WB                     |
| <b>Primary Accession</b> | <a href="#">P12724</a> |
| <b>Reactivity</b>        | Human                  |
| <b>Host</b>              | Rabbit                 |
| <b>Clonality</b>         | Polyclonal             |
| <b>Calculated MW</b>     | 18385                  |

## Additional Information

---

|                           |   |
|---------------------------|---|
| <b>Gene ID</b>            | 6037  |
| <b>Other Names</b>        | RNASE3; ECP; RNS3; Eosinophil cationic protein; ECP; Ribonuclease 3; RNase 3            |
| <b>Dilution</b>           | WB~~Western Blot: 1/500 - 1/2000. ELISA: 1/10000. Not yet tested in other applications. |
| <b>Format</b>             | Liquid in PBS containing 50% glycerol, 0.5% BSA and 0.09% (W/V) sodium azide.           |
| <b>Storage Conditions</b> | -20°C   |

## Protein Information

---

|                          |  |
|--------------------------|--|
| <b>Name</b>              | RNASE3   |
| <b>Synonyms</b>          | ECP, RNS3  |
| <b>Function</b>          | Cytotoxin and helminthotoxin with low-efficiency ribonuclease activity. Possesses a wide variety of biological activities. Exhibits antibacterial activity, including cytoplasmic membrane depolarization of preferentially Gram-negative, but also Gram-positive strains. Promotes E.coli outer membrane detachment, alteration of the overall cell shape and partial loss of cell content. |
| <b>Cellular Location</b> | Secreted. Note=Located in the matrix of eosinophil large specific granule, which are released following activation by an immune stimulus   |

## Background

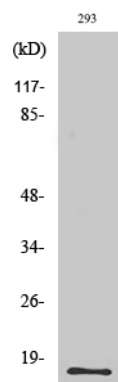
---

Cytotoxin and helminthotoxin with low-efficiency ribonuclease activity. Possesses a wide variety of biological activities. Exhibits antibacterial activity, including cytoplasmic membrane depolarization of preferentially Gram-negative, but also Gram-positive strains. Promotes E.coli outer membrane detachment,

alteration of the overall cell shape and partial loss of cell content.

Images

---



Western Blot analysis of various cells using ECP Polyclonal Antibody

Please note: All products are 'FOR RESEARCH USE ONLY. NOT FOR USE IN DIAGNOSTIC OR THERAPEUTIC PROCEDURES'.