

# Eg5 Polyclonal Antibody

Catalog # AP69663

## Product Information

---

Application	WB, IHC-P, IF
Primary Accession	<a href="#">P52732</a>
Reactivity	Human
Host	Rabbit
Clonality	Polyclonal
Calculated MW	119159

## Additional Information

---

Gene ID	3832
Other Names	KIF11; EG5; KNSL1; TRIP5; Kinesin-like protein KIF11; Kinesin-like protein 1; Kinesin-like spindle protein HKSP; Kinesin-related motor protein Eg5; Thyroid receptor-interacting protein 5; TR-interacting protein 5; TRIP-5
Dilution	WB~~Western Blot: 1/500 - 1/2000. Immunohistochemistry: 1/100 - 1/300. Immunofluorescence: 1/200 - 1/1000. ELISA: 1/20000. Not yet tested in other applications. IHC-P~~Western Blot: 1/500 - 1/2000. Immunohistochemistry: 1/100 - 1/300. Immunofluorescence: 1/200 - 1/1000. ELISA: 1/20000. Not yet tested in other applications. IF~~1:50~200
Format	Liquid in PBS containing 50% glycerol, 0.5% BSA and 0.09% (W/V) sodium azide.
Storage Conditions	-20°C

## Protein Information

---

Name	KIF11
Synonyms	EG5, KNSL1, TRIP5
Function	Motor protein required for establishing a bipolar spindle and thus contributing to chromosome congression during mitosis (PubMed: <a href="#">19001501</a> , PubMed: <a href="#">37728657</a> ). Required in non-mitotic cells for transport of secretory proteins from the Golgi complex to the cell surface (PubMed: <a href="#">23857769</a> ).
Cellular Location	Cytoplasm. Cytoplasm, cytoskeleton, spindle pole

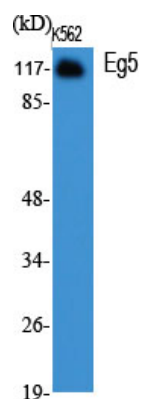
## Background

---

Motor protein required for establishing a bipolar spindle during mitosis (PubMed: [19001501](#)). Required in

non-mitotic cells for transport of secretory proteins from the Golgi complex to the cell surface (PubMed:[23857769](#)).

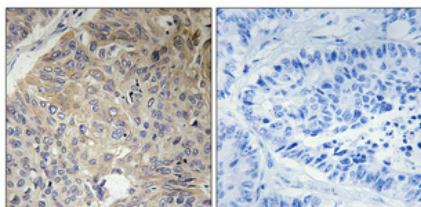
## Images



Western Blot analysis of various cells using Eg5 Polyclonal Antibody cells nucleus extracted by Minute TM Cytoplasmic and Nuclear Fractionation kit (SC-003, Inventbiotech, MN, USA).



Western Blot analysis of COLO205 cells using Eg5 Polyclonal Antibody cells nucleus extracted by Minute TM Cytoplasmic and Nuclear Fractionation kit (SC-003, Inventbiotech, MN, USA).



Immunohistochemical analysis of paraffin-embedded Human lung cancer. Antibody was diluted at 1:100 (4°, overnight). High-pressure and temperature Tris-EDTA, pH 8.0 was used for antigen retrieval. Negative control (right) obtained from antibody was pre-absorbed by immunogen peptide.

Please note: All products are 'FOR RESEARCH USE ONLY. NOT FOR USE IN DIAGNOSTIC OR THERAPEUTIC PROCEDURES'.