

EGFR Polyclonal Antibody

Catalog # AP69669

Product Information

Application	WB
Primary Accession	P00533
Reactivity	Human, Mouse, Rat
Host	Rabbit
Clonality	Polyclonal
Calculated MW	134277

Additional Information

Gene ID	1956
Other Names	EGFR; ERBB; ERBB1; HER1; Epidermal growth factor receptor; Proto-oncogene c-ErbB-1; Receptor tyrosine-protein kinase erbB-1
Dilution	WB~~Western Blot: 1/500 - 1/2000. ELISA: 1/40000. Not yet tested in other applications.
Format	Liquid in PBS containing 50% glycerol, 0.5% BSA and 0.09% (W/V) sodium azide.
Storage Conditions	-20°C

Protein Information

Name	EGFR (HGNC:3236)
Synonyms	ERBB, ERBB1, HER1
Function	Receptor tyrosine kinase binding ligands of the EGF family and activating several signaling cascades to convert extracellular cues into appropriate cellular responses (PubMed: 10805725 , PubMed: 27153536 , PubMed: 2790960 , PubMed: 35538033). Known ligands include EGF, TGFA/TGF- alpha, AREG, epigen/EPGN, BTC/betacellulin, epiregulin/EREG and HBEGF/heparin-binding EGF (PubMed: 12297049 , PubMed: 15611079 , PubMed: 17909029 , PubMed: 20837704 , PubMed: 27153536 , PubMed: 2790960 , PubMed: 7679104 , PubMed: 8144591 , PubMed: 9419975). Ligand binding triggers receptor homo- and/or heterodimerization and autophosphorylation on key cytoplasmic residues. The phosphorylated receptor recruits adapter proteins like GRB2 which in turn activates complex downstream signaling cascades. Activates at least 4 major downstream signaling cascades including the RAS-RAF-MEK-ERK, PI3 kinase-AKT, PLCgamma-PKC and STATs modules (PubMed: 27153536). May also activate the NF-kappa-B signaling cascade (PubMed: 11116146). Also directly phosphorylates other proteins like RGS16, activating its GTPase

activity and probably coupling the EGF receptor signaling to the G protein-coupled receptor signaling (PubMed:[11602604](#)). Also phosphorylates MUC1 and increases its interaction with SRC and CTNNB1/beta-catenin (PubMed:[11483589](#)). Positively regulates cell migration via interaction with CCDC88A/GIV which retains EGFR at the cell membrane following ligand stimulation, promoting EGFR signaling which triggers cell migration (PubMed:[20462955](#)). Plays a role in enhancing learning and memory performance (By similarity). Plays a role in mammalian pain signaling (long-lasting hypersensitivity) (By similarity).

Cellular Location

Cell membrane; Single-pass type I membrane protein. Endoplasmic reticulum membrane; Single-pass type I membrane protein Golgi apparatus membrane; Single-pass type I membrane protein. Nucleus membrane; Single-pass type I membrane protein. Endosome. Endosome membrane. Nucleus. Note=In response to EGF, translocated from the cell membrane to the nucleus via Golgi and ER (PubMed:17909029, PubMed:20674546). Endocytosed upon activation by ligand (PubMed:17182860, PubMed:17909029, PubMed:27153536, PubMed:2790960). Colocalized with GPER1 in the nucleus of estrogen agonist-induced cancer-associated fibroblasts (CAF) (PubMed:20551055)

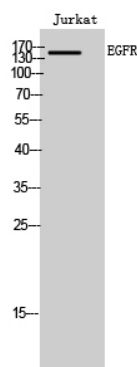
Tissue Location

Ubiquitously expressed. Isoform 2 is also expressed in ovarian cancers.

Background

Receptor tyrosine kinase binding ligands of the EGF family and activating several signaling cascades to convert extracellular cues into appropriate cellular responses (PubMed:[2790960](#), PubMed:[10805725](#), PubMed:[27153536](#)). Known ligands include EGF, TGFA/TGF-alpha, AREG, epigen/EPGN, BTC/betacellulin, epiregulin/EREG and HBEGF/heparin-binding EGF (PubMed:[2790960](#), PubMed:[7679104](#), PubMed:[8144591](#), PubMed:[9419975](#), PubMed:[15611079](#), PubMed:[12297049](#), PubMed:[27153536](#), PubMed:[20837704](#)). Ligand binding triggers receptor homo- and/or heterodimerization and autophosphorylation on key cytoplasmic residues. The phosphorylated receptor recruits adapter proteins like GRB2 which in turn activates complex downstream signaling cascades. Activates at least 4 major downstream signaling cascades including the RAS-RAF-MEK-ERK, PI3 kinase-AKT, PLCgamma-PKC and STATs modules (PubMed:[27153536](#)). May also activate the NF-kappa-B signaling cascade (PubMed:[11116146](#)). Also directly phosphorylates other proteins like RGS16, activating its GTPase activity and probably coupling the EGF receptor signaling to the G protein-coupled receptor signaling (PubMed:[11602604](#)). Also phosphorylates MUC1 and increases its interaction with SRC and CTNNB1/beta-catenin (PubMed:[11483589](#)). Plays a role in enhancing learning and memory performance (By similarity).

Images



Western Blot analysis of Jurkat cells using EGFR Polyclonal Antibody