

Elk-1 Polyclonal Antibody

Catalog # AP69710

Product Information

Application	WB, IHC-P, IF, ICC, E
Primary Accession	P19419
Reactivity	Human, Mouse, Rat
Host	Rabbit
Clonality	Polyclonal
Calculated MW	44888

Additional Information

Gene ID	2002
Other Names	ELK1; ETS domain-containing protein Elk-1
Dilution	WB~~Western Blot: 1/500 - 1/2000. Immunohistochemistry: 1/100 - 1/300. Immunoprecipitation: 2-5 ug/mg lysate. ELISA: 1/10000. Not yet tested in other applications. IHC-P~~N/A IF~~1:50~200 ICC~~N/A E~~N/A
Format	Liquid in PBS containing 50% glycerol, 0.5% BSA and 0.09% (W/V) sodium azide.
Storage Conditions	-20°C

Protein Information

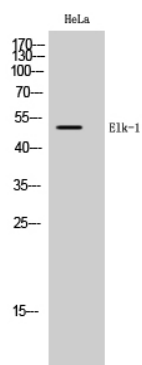
Name	ELK1 (HGNC:3321)
Function	Transcription factor that binds to purine-rich DNA sequences (PubMed: 10799319 , PubMed: 7889942). Forms a ternary complex with SRF and the ETS and SRF motifs of the serum response element (SRE) on the promoter region of immediate early genes such as FOS and IER2 (PubMed: 1630903). Induces target gene transcription upon JNK and MAPK-signaling pathways stimulation (PubMed: 7889942).
Cellular Location	Nucleus.
Tissue Location	Lung and testis.

Background

Transcription factor that binds to purine-rich DNA sequences. Forms a ternary complex with SRF and the ETS and SRF motifs of the serum response element (SRE) on the promoter region of immediate early genes such as FOS and IER2. Induces target gene transcription upon JNK-signaling pathway stimulation (By

similarity).

Images



Western Blot analysis of HeLa cells using Elk-1 Polyclonal Antibody cells nucleus extracted by Minute TM Cytoplasmic and Nuclear Fractionation kit (SC-003, Inventbiotech, MN, USA).

Please note: All products are 'FOR RESEARCH USE ONLY. NOT FOR USE IN DIAGNOSTIC OR THERAPEUTIC PROCEDURES'.