

# EMR2 Polyclonal Antibody

Catalog # AP69729

## Product Information

---

|                   |                        |
|-------------------|------------------------|
| Application       | WB, IF                 |
| Primary Accession | <a href="#">Q9UHX3</a> |
| Reactivity        | Human                  |
| Host              | Rabbit                 |
| Clonality         | Polyclonal             |
| Calculated MW     | 90472                  |

## Additional Information

---

|                    |  |
|--------------------|--|
| Gene ID            | 30817  |
| Other Names        | EMR2; EGF-like module-containing mucin-like hormone receptor-like 2; EGF-like module receptor 2; CD antigen CD312                        |
| Dilution           | WB~~Western Blot: 1/500 - 1/2000. Immunofluorescence: 1/200 - 1/1000. ELISA: 1/20000. Not yet tested in other applications. IF~~1:50~200 |
| Format             | Liquid in PBS containing 50% glycerol, 0.5% BSA and 0.09% (W/V) sodium azide.  |
| Storage Conditions | -20°C  |

## Protein Information

---

|                   |  |
|-------------------|--|
| Name              | ADGRE2 ( <a href="#">HGNC:3337</a> )   |
| Synonyms          | EMR2   |
| Function          | Cell surface receptor that binds to the chondroitin sulfate moiety of glycosaminoglycan chains and promotes cell attachment. Promotes granulocyte chemotaxis, degranulation and adhesion. In macrophages, promotes the release of inflammatory cytokines, including IL8 and TNF. Signals probably through G-proteins. Is a regulator of mast cell degranulation (PubMed: <a href="#">26841242</a> ). |
| Cellular Location | Cell membrane; Multi-pass membrane protein. Cell projection, ruffle membrane; Multi-pass membrane protein. Note=Localized at the leading edge of migrating cells.  |
| Tissue Location   | Expression is restricted to myeloid cells. Highest expression was found in peripheral blood leukocytes, followed by spleen and lymph nodes, with intermediate to low levels in thymus, bone marrow, fetal liver, placenta, and lung, and no expression in heart, brain, skeletal muscle, kidney, or pancreas.  |

Expression is also detected in monocyte/macrophage and Jurkat cell lines but not in other cell lines tested. High expression in mast cells (PubMed:26841242)

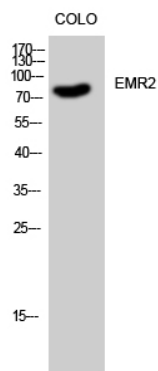
## Background

---

Cell surface receptor that binds to the chondroitin sulfate moiety of glycosaminoglycan chains and promotes cell attachment. Promotes granulocyte chemotaxis, degranulation and adhesion. In macrophages, promotes the release of inflammatory cytokines, including IL8 and TNF. Signals probably through G-proteins. Is a regulator of mast cell degranulation (PubMed:[26841242](#)).

## Images

---



Western Blot analysis of COLO cells using EMR2 Polyclonal Antibody

Please note: All products are 'FOR RESEARCH USE ONLY. NOT FOR USE IN DIAGNOSTIC OR THERAPEUTIC PROCEDURES'.