

# Endoplasmin Polyclonal Antibody

Catalog # AP69743

## Product Information

Application	WB, IHC-P, IF
Primary Accession	<a href="#">P14625</a>
Reactivity	Human, Mouse
Host	Rabbit
Clonality	Polyclonal
Calculated MW	92469

## Additional Information

Gene ID	7184
Other Names	HSP90B1; GRP94; TRA1; Endoplasmin; 94 kDa glucose-regulated protein; GRP-94; Heat shock protein 90 kDa beta member 1; Tumor rejection antigen 1; gp96 homolog
Dilution	WB~~Western Blot: 1/500 - 1/2000. Immunohistochemistry: 1/100 - 1/300. Immunofluorescence: 1/200 - 1/1000. ELISA: 1/20000. Not yet tested in other applications. IHC-P~~N/A IF~~1:50~200
Format	Liquid in PBS containing 50% glycerol, 0.5% BSA and 0.09% (W/V) sodium azide.
Storage Conditions	-20°C

## Protein Information

Name	HSP90B1 {ECO:0000303 PubMed:39509507, ECO:0000312 HGNC:HGNC:12028}
Function	ATP-dependent chaperone involved in the processing of proteins in the endoplasmic reticulum, regulating their transport (PubMed: <a href="#">23572575</a> , PubMed: <a href="#">39509507</a> ). Together with MESD, acts as a modulator of the Wnt pathway by promoting the folding of LRP6, a coreceptor of the canonical Wnt pathway (PubMed: <a href="#">23572575</a> , PubMed: <a href="#">39509507</a> ). When associated with CNPY3, required for proper folding of Toll-like receptors (PubMed: <a href="#">11584270</a> ). Promotes folding and trafficking of TLR4 to the cell surface (PubMed: <a href="#">11584270</a> ). May participate in the unfolding of cytosolic leaderless cargos (lacking the secretion signal sequence) such as the interleukin 1/IL-1 to facilitate their translocation into the ERGIC (endoplasmic reticulum- Golgi intermediate compartment) and secretion; the translocation process is mediated by the cargo receptor TMED10 (PubMed: <a href="#">32272059</a> ).
Cellular Location	Endoplasmic reticulum lumen. Sarcoplasmic reticulum lumen

{ECO:0000250|UniProtKB:P41148}. Melanosome Note=Identified by mass spectrometry in melanosome fractions from stage I to stage IV.

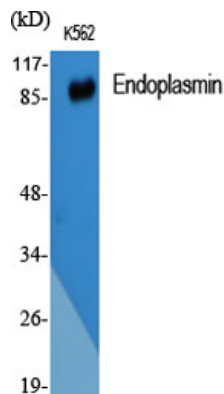
## Background

---

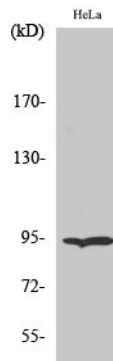
Molecular chaperone that functions in the processing and transport of secreted proteins. When associated with CNPY3, required for proper folding of Toll-like receptors (By similarity). Functions in endoplasmic reticulum associated degradation (ERAD). Has ATPase activity.

## Images

---



Western Blot analysis of various cells using Endoplasmin Polyclonal Antibody diluted at 1 : 1000



Western Blot analysis of HeLa cells using Endoplasmin Polyclonal Antibody diluted at 1 : 1000

Please note: All products are 'FOR RESEARCH USE ONLY. NOT FOR USE IN DIAGNOSTIC OR THERAPEUTIC PROCEDURES'.