

Eps8L2 Polyclonal Antibody

Catalog # AP69782

Product Information

Application	WB, IHC-P, IF, ICC, E
Primary Accession	Q9H6S3
Reactivity	Human, Mouse
Host	Rabbit
Clonality	Polyclonal
Calculated MW	80621

Additional Information

Gene ID	64787
Other Names	EPS8L2; EPS8R2; PP13181; Epidermal growth factor receptor kinase substrate 8-like protein 2; EPS8-like protein 2; Epidermal growth factor receptor pathway substrate 8-related protein 2; EPS8-related protein 2
Dilution	WB~~Western Blot: 1/500 - 1/2000. Immunohistochemistry: 1/100 - 1/300. Immunofluorescence: 1/200 - 1/1000. ELISA: 1/40000. Not yet tested in other applications. IHC-P~~N/A IF~~1:50~200 ICC~~N/A E~~N/A
Format	Liquid in PBS containing 50% glycerol, 0.5% BSA and 0.09% (W/V) sodium azide.
Storage Conditions	-20°C

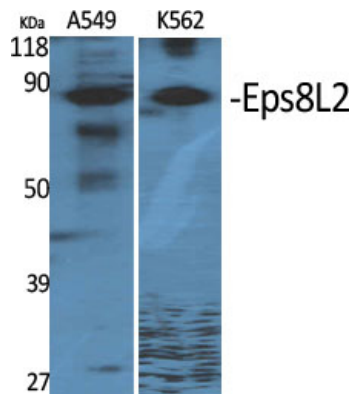
Protein Information

Name	EPS8L2
Synonyms	EPS8R2
Function	Stimulates guanine exchange activity of SOS1. May play a role in membrane ruffling and remodeling of the actin cytoskeleton. In the cochlea, is required for stereocilia maintenance in adult hair cells (By similarity).
Cellular Location	Cytoplasm. Cell projection, stereocilium {ECO:0000250 UniProtKB:Q99K30}. Note=Localizes at the tips of the stereocilia of the inner and outer hair cells {ECO:0000250 UniProtKB:Q99K30}
Tissue Location	Detected in fibroblasts and placenta.

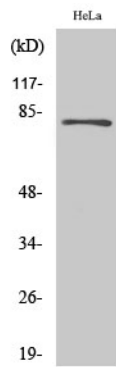
Background

Stimulates guanine exchange activity of SOS1. May play a role in membrane ruffling and remodeling of the actin cytoskeleton. In the cochlea, is required for stereocilia maintenance in adult hair cells (By similarity).

Images



Western Blot analysis of various cells using Eps8L2 Polyclonal Antibody



Western Blot analysis of HuvEc cells using Eps8L2 Polyclonal Antibody

Please note: All products are 'FOR RESEARCH USE ONLY. NOT FOR USE IN DIAGNOSTIC OR THERAPEUTIC PROCEDURES'.