

Epsin 1 Polyclonal Antibody

Catalog # AP69784

Product Information

Application	WB, E
Primary Accession	Q9Y6I3
Reactivity	Human, Mouse, Rat
Host	Rabbit
Clonality	Polyclonal
Calculated MW	60293

Additional Information

Gene ID	29924
Other Names	EPN1; Epsin-1; EH domain-binding mitotic phosphoprotein; EPS-15-interacting protein 1
Dilution	WB~~Western Blot: 1/500 - 1/2000. ELISA: 1/40000. Not yet tested in other applications. E~~N/A
Format	Liquid in PBS containing 50% glycerol, 0.5% BSA and 0.09% (W/V) sodium azide.
Storage Conditions	-20°C

Protein Information

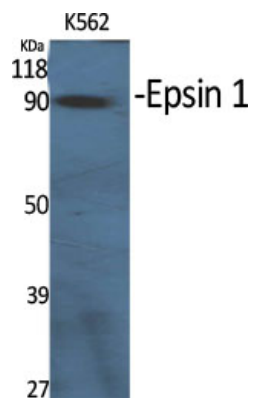
Name	EPN1
Function	Binds to membranes enriched in phosphatidylinositol 4,5- biphosphate (PtdIns(4,5)P2). Modifies membrane curvature and facilitates the formation of clathrin-coated invaginations (By similarity). Regulates receptor-mediated endocytosis (PubMed: 10393179 , PubMed: 10557078).
Cellular Location	Cytoplasm. Cell membrane; Peripheral membrane protein. Nucleus. Membrane, clathrin-coated pit Note=Associated with the cytoplasmic membrane at sites where clathrin- coated pits are forming. Colocalizes with clathrin and AP-2 in a punctate pattern on the plasma membrane. Detected in presynaptic nerve terminals and in Golgi stacks. May shuttle to the nucleus when associated with ZBTB16/ZNF145 (By similarity).

Background

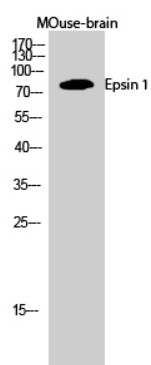
Binds to membranes enriched in phosphatidylinositol 4,5- biphosphate (PtdIns(4,5)P2). Modifies membrane curvature and facilitates the formation of clathrin-coated invaginations (By similarity). Regulates

receptor-mediated endocytosis.

Images



Western Blot analysis of various cells using Epsin 1
Polyclonal Antibody diluted at 1 : 1000



Western Blot analysis of MOuse-brain cells using Epsin 1
Polyclonal Antibody diluted at 1 : 1000

Please note: All products are 'FOR RESEARCH USE ONLY. NOT FOR USE IN DIAGNOSTIC OR THERAPEUTIC PROCEDURES'.