

# ETAR Polyclonal Antibody

Catalog # AP69823

## Product Information

---

<b>Application</b>	WB, IF
<b>Primary Accession</b>	<a href="#">P25101</a>
<b>Reactivity</b>	Human, Mouse, Rat
<b>Host</b>	Rabbit
<b>Clonality</b>	Polyclonal
<b>Calculated MW</b>	48722

## Additional Information

---

<b>Gene ID</b>	1909
<b>Other Names</b>	EDNRA; ETA; ETRA; Endothelin-1 receptor; Endothelin A receptor; ET-A; ETA-R; hET-AR
<b>Dilution</b>	WB~~Western Blot: 1/500 - 1/2000. Immunofluorescence: 1/200 - 1/1000. ELISA: 1/20000. Not yet tested in other applications. IF~~1:50~200
<b>Format</b>	Liquid in PBS containing 50% glycerol, 0.5% BSA and 0.09% (W/V) sodium azide.
<b>Storage Conditions</b>	-20°C

## Protein Information

---

<b>Name</b>	EDNRA ( <a href="#">HGNC:3179</a> )
<b>Synonyms</b>	ETA, ETRA
<b>Function</b>	Receptor for endothelin-1. Mediates its action by association with G proteins that activate a phosphatidylinositol-calcium second messenger system. The rank order of binding affinities for ET-A is: ET1 > ET2 >> ET3.
<b>Cellular Location</b>	Cell membrane; Multi-pass membrane protein.
<b>Tissue Location</b>	Isoform 1, isoform 3 and isoform 4 are expressed in a variety of tissues, with highest levels in the aorta and cerebellum, followed by lung, atrium and cerebral cortex, lower levels in the placenta, kidney, adrenal gland, duodenum, colon, ventricle and liver but no expression in umbilical vein endothelial cells. Within the placenta, isoform 1, isoform 2, isoform 3 and isoform 4 are expressed in the villi and stem villi vessels.

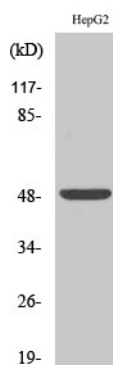
## Background

---

Receptor for endothelin-1. Mediates its action by association with G proteins that activate a phosphatidylinositol- calcium second messenger system. The rank order of binding affinities for ET-A is: ET1 > ET2 >> ET3.

## Images

---



Western Blot analysis of various cells using ETAR  
Polyclonal Antibody cells nucleus extracted by Minute TM  
Cytoplasmic and Nuclear Fractionation kit  
(SC-003, Inventbiotech, MN, USA).

Please note: All products are 'FOR RESEARCH USE ONLY. NOT FOR USE IN DIAGNOSTIC OR THERAPEUTIC PROCEDURES'.