

Ethanolamine kinase 2 Polyclonal Antibody

Catalog # AP69824

Product Information

Application	WB, IHC-P, IF, ICC, E
Primary Accession	Q9NVF9
Reactivity	Human, Mouse
Host	Rabbit
Clonality	Polyclonal
Calculated MW	44781

Additional Information

Gene ID	55224
Other Names	ETNK2; EKI2; HMFT1716; Ethanolamine kinase 2; EKI 2; Ethanolamine kinase-like protein
Dilution	WB~~Western Blot: 1/500 - 1/2000. ELISA: 1/5000. Not yet tested in other applications. IHC-P~~N/A IF~~1:50~200 ICC~~N/A E~~N/A
Format	Liquid in PBS containing 50% glycerol, 0.5% BSA and 0.09% (W/V) sodium azide.
Storage Conditions	-20°C

Protein Information

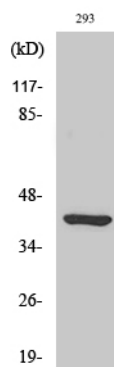
Name	ETNK2
Synonyms	EKI2
Function	Highly specific for ethanolamine phosphorylation. Does not have choline kinase activity (By similarity).
Tissue Location	Expressed in kidney, liver, ovary, testis and prostate.

Background

Highly specific for ethanolamine phosphorylation. Does not have choline kinase activity (By similarity).

Images

Western Blot analysis of various cells using Ethanolamine



kinase 2 Polyclonal Antibody

Please note: All products are 'FOR RESEARCH USE ONLY. NOT FOR USE IN DIAGNOSTIC OR THERAPEUTIC PROCEDURES'.