

# EWS Polyclonal Antibody

Catalog # AP69828

## Product Information

---

|                   |                        |
|-------------------|------------------------|
| Application       | WB                     |
| Primary Accession | <a href="#">Q01844</a> |
| Reactivity        | Human, Mouse, Rat      |
| Host              | Rabbit                 |
| Clonality         | Polyclonal             |
| Calculated MW     | 68478                  |

## Additional Information

---

|                    |  |
|--------------------|--|
| Gene ID            | 2130   |
| Other Names        | EWSR1; EWS; RNA-binding protein EWS; EWS oncogene; Ewing sarcoma breakpoint region 1 protein |
| Dilution           | WB~~Western Blot: 1/500 - 1/2000. ELISA: 1/10000. Not yet tested in other applications.      |
| Format             | Liquid in PBS containing 50% glycerol, 0.5% BSA and 0.09% (W/V) sodium azide.                |
| Storage Conditions | -20°C  |

## Protein Information

---

|                   |   |
|-------------------|---|
| Name              | EWSR1   |
| Synonyms          | EWS   |
| Function          | Binds to ssRNA containing the consensus sequence 5'-AGGUAA-3' (PubMed: <a href="#">21256132</a> ). Might normally function as a transcriptional repressor (PubMed: <a href="#">10767297</a> ). EWS-fusion-proteins (EFPS) may play a role in the tumorigenic process. They may disturb gene expression by mimicking, or interfering with the normal function of CTD-POLII within the transcription initiation complex. They may also contribute to an aberrant activation of the fusion protein target genes. |
| Cellular Location | Nucleus. Cytoplasm. Cell membrane. Note=Relocates from cytoplasm to ribosomes upon PTK2B/FAK2 activation  |
| Tissue Location   | Ubiquitous.   |

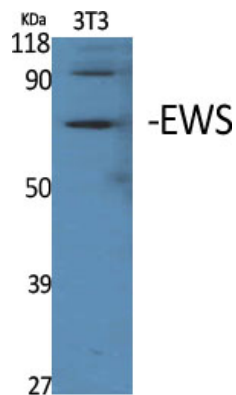
## Background

---

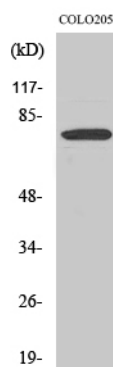
Might normally function as a transcriptional repressor. EWS-fusion-proteins (EFPS) may play a role in the tumorigenic process. They may disturb gene expression by mimicking, or interfering with the normal function of CTD-POLII within the transcription initiation complex. They may also contribute to an aberrant activation of the fusion protein target genes.

## Images

---



Western Blot analysis of various cells using EWS Polyclonal Antibody



Western Blot analysis of COLO205 cells using EWS Polyclonal Antibody

Please note: All products are 'FOR RESEARCH USE ONLY. NOT FOR USE IN DIAGNOSTIC OR THERAPEUTIC PROCEDURES'.