

# FBP3 Polyclonal Antibody

Catalog # AP69869

## Product Information

---

<b>Application</b>	WB, IHC-P
<b>Primary Accession</b>	<a href="#">Q96I24</a>
<b>Reactivity</b>	Human, Mouse, Rat
<b>Host</b>	Rabbit
<b>Clonality</b>	Polyclonal
<b>Calculated MW</b>	61640

## Additional Information

---

<b>Gene ID</b>	8939
<b>Other Names</b>	FUBP3; FBP3; Far upstream element-binding protein 3; FUSE-binding protein 3
<b>Dilution</b>	WB~~Western Blot: 1/500 - 1/2000. Immunohistochemistry: 1/100 - 1/300. ELISA: 1/20000. Not yet tested in other applications. IHC-P~~N/A
<b>Format</b>	Liquid in PBS containing 50% glycerol, 0.5% BSA and 0.09% (W/V) sodium azide.
<b>Storage Conditions</b>	-20°C

## Protein Information

---

<b>Name</b>	FUBP3
<b>Synonyms</b>	FBP3
<b>Function</b>	May interact with single-stranded DNA from the far-upstream element (FUSE). May activate gene expression.
<b>Cellular Location</b>	Nucleus.
<b>Tissue Location</b>	Detected in a number of cell lines.

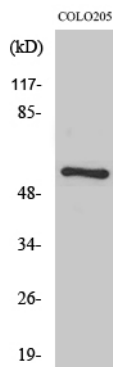
## Background

---

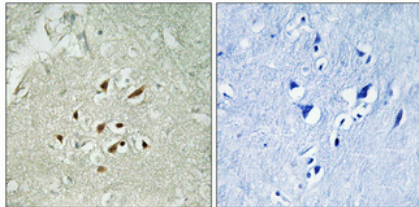
May interact with single-stranded DNA from the far- upstream element (FUSE). May activate gene expression.

## Images

---



Western Blot analysis of various cells using FBP3 Polyclonal Antibody cells nucleus extracted by Minute TM Cytoplasmic and Nuclear Fractionation kit (SC-003, Inventbiotech, MN, USA).



Immunohistochemical analysis of paraffin-embedded Human brain. Antibody was diluted at 1:100(4°, overnight). High-pressure and temperature Tris-EDTA, pH8.0 was used for antigen retrieval. Negative control (right) obtained from antibody was pre-absorbed by immunogen peptide.

Please note: All products are 'FOR RESEARCH USE ONLY. NOT FOR USE IN DIAGNOSTIC OR THERAPEUTIC PROCEDURES'.