

ITGAX Antibody (C-term)

Affinity Purified Rabbit Polyclonal Antibody (Pab)

Catalog # AP6986B

Product Information

Application	WB, IHC-P, IF, FC, E
Primary Accession	P20702
Reactivity	Human, Mouse, Rat
Host	Rabbit
Clonality	Polyclonal
Isotype	Rabbit IgG
Clone Names	RB21771
Calculated MW	127829
Antigen Region	1119-1145

Additional Information

Gene ID	3687
Other Names	Integrin alpha-X, CD11 antigen-like family member C, Leu M5, Leukocyte adhesion glycoprotein p150, 95 alpha chain, Leukocyte adhesion receptor p150, CD11c, ITGAX, CD11C
Target/Specificity	This ITGAX antibody is generated from rabbits immunized with a KLH conjugated synthetic peptide between 1119-1145 amino acids from the C-terminal region of human ITGAX.
Dilution	WB~~1:500 IHC-P~~1:100~500 IF~~1:10~50 FC~~1:10~50 E~~Use at an assay dependent concentration.
Format	Purified polyclonal antibody supplied in PBS with 0.09% (W/V) sodium azide. This antibody is purified through a protein A column, followed by peptide affinity purification.
Storage	Maintain refrigerated at 2-8°C for up to 2 weeks. For long term storage store at -20°C in small aliquots to prevent freeze-thaw cycles.
Precautions	ITGAX Antibody (C-term) is for research use only and not for use in diagnostic or therapeutic procedures.

Protein Information

Name	ITGAX
Synonyms	CD11C

Function	Integrin alpha-X/beta-2 is a receptor for fibrinogen. It recognizes the sequence G-P-R in fibrinogen. It mediates cell-cell interaction during inflammatory responses. It is especially important in monocyte adhesion and chemotaxis.
Cellular Location	Membrane; Single-pass type I membrane protein.
Tissue Location	Predominantly expressed in monocytes and granulocytes

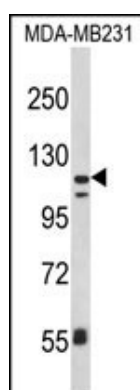
Background

ITGAX is the integrin alpha X chain protein. Integrins are heterodimeric integral membrane proteins composed of an alpha chain and a beta chain. This protein combines with the beta 2 chain (ITGB2) to form a leukocyte-specific integrin referred to as inactivated-C3b (iC3b) receptor 4 (CR4). The alpha X beta 2 complex seems to overlap the properties of the alpha M beta 2 integrin in the adherence of neutrophils and monocytes to stimulated endothelium cells, and in the phagocytosis of complement coated particles.

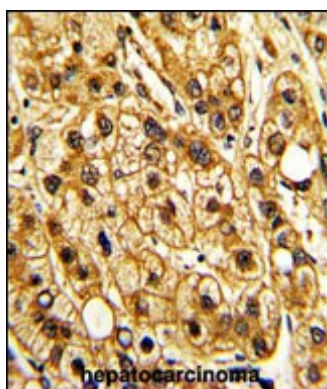
References

Bulloch,K., et.al., J. Comp. Neurol. 508 (5), 687-710 (2008)

Images

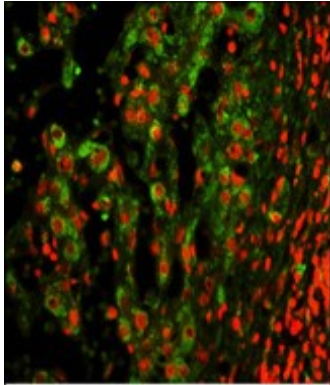
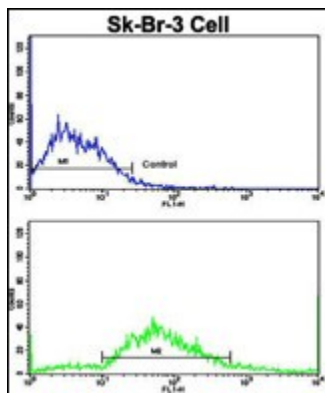


Western blot analysis of ITGAX Antibody (C-term) (Cat. #AP6986b) in MDA-MB231 cell line lysates (35ug/lane). ITGAX (arrow) was detected using the purified Pab.



Formalin-fixed and paraffin-embedded human hepatocarcinoma with ITGAX Antibody (C-term), which was peroxidase-conjugated to the secondary antibody, followed by DAB staining. This data demonstrates the use of this antibody for immunohistochemistry; clinical relevance has not been evaluated.

Flow cytometric analysis of SK-Br-3 cells using ITGAX Antibody (C-term)(bottom histogram) compared to a negative control cell (top histogram). FITC-conjugated goat-anti-rabbit secondary antibodies were used for the analysis.



Immunofluorescence analysis of ITGAX Antibody (C-term) with paraffin-embedded human hepatocarcinoma . 0.05 mg/ml primary antibody was followed by FITC-conjugated goat anti-rabbit IgG (whole molecule). FITC emits green fluorescence.Red counterstaining is PI.

Citations

- [Mitochondria elongation is mediated through SIRT1-mediated MFN1 stabilization.](#)

Please note: All products are 'FOR RESEARCH USE ONLY. NOT FOR USE IN DIAGNOSTIC OR THERAPEUTIC PROCEDURES'.