

Fibulin-2 Polyclonal Antibody

Catalog # AP69890

Product Information

Application	WB, IHC-P, IF
Primary Accession	P98095
Reactivity	Human
Host	Rabbit
Clonality	Polyclonal
Calculated MW	126573

Additional Information

Gene ID	2199
Other Names	FBLN2; Fibulin-2; FIBL-2
Dilution	WB~~Western Blot: 1/500 - 1/2000. Immunohistochemistry: 1/100 - 1/300. Immunofluorescence: 1/200 - 1/1000. ELISA: 1/40000. Not yet tested in other applications. IHC-P~~N/A IF~~1:50~200
Format	Liquid in PBS containing 50% glycerol, 0.5% BSA and 0.09% (W/V) sodium azide.
Storage Conditions	-20°C

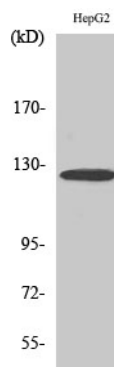
Protein Information

Name	FBLN2
Function	Its binding to fibronectin and some other ligands is calcium dependent. May act as an adapter that mediates the interaction between FBN1 and ELN (PubMed: 17255108).
Cellular Location	Secreted, extracellular space, extracellular matrix
Tissue Location	Component of both basement membranes and other connective tissues. Expressed in heart, placenta and ovary

Background

Its binding to fibronectin and some other ligands is calcium dependent. May act as an adapter that mediates the interaction between FBN1 and ELN (PubMed:[17255108](#)).

Images



Western Blot analysis of various cells using Fibulin-2
Polyclonal Antibody diluted at 1 : 500

Please note: All products are 'FOR RESEARCH USE ONLY. NOT FOR USE IN DIAGNOSTIC OR THERAPEUTIC PROCEDURES'.