

SELL Antibody (C-term)

Affinity Purified Rabbit Polyclonal Antibody (Pab)

Catalog # AP6990B

Product Information

Application	IHC-P, WB, FC, E
Primary Accession	P14151
Reactivity	Human
Host	Rabbit
Clonality	Polyclonal
Isotype	Rabbit IgG
Calculated MW	42187
Antigen Region	346-372

Additional Information

Gene ID	6402
Other Names	L-selectin, CD62 antigen-like family member L, Leukocyte adhesion molecule 1, LAM-1, Leukocyte surface antigen Leu-8, Leukocyte-endothelial cell adhesion molecule 1, LECAM1, Lymph node homing receptor, TQ1, gp90-MEL, CD62L, SELL, LNHR, LYAM1
Target/Specificity	This SELL antibody is generated from rabbits immunized with a KLH conjugated synthetic peptide between 346-372 amino acids from the C-terminal region of human SELL.
Dilution	IHC-P~~1:100~500 WB~~1:2000 FC~~1:25 E~~Use at an assay dependent concentration.
Format	Purified polyclonal antibody supplied in PBS with 0.09% (W/V) sodium azide. This antibody is purified through a protein A column, followed by peptide affinity purification.
Storage	Maintain refrigerated at 2-8°C for up to 2 weeks. For long term storage store at -20°C in small aliquots to prevent freeze-thaw cycles.
Precautions	SELL Antibody (C-term) is for research use only and not for use in diagnostic or therapeutic procedures.

Protein Information

Name	SELL
Synonyms	LNHR, LYAM1

Function	Calcium-dependent lectin that mediates cell adhesion by binding to glycoproteins on neighboring cells (PubMed: 12403782 , PubMed: 28011641 , PubMed: 28489325). Mediates the adherence of lymphocytes to endothelial cells of high endothelial venules in peripheral lymph nodes. Promotes initial tethering and rolling of leukocytes in endothelia (PubMed: 12403782 , PubMed: 28011641).
Cellular Location	Cell membrane; Single-pass type I membrane protein
Tissue Location	Expressed in B-cell lines and T-lymphocytes.

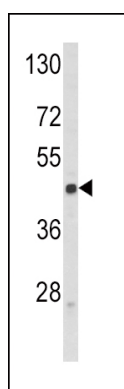
Background

SELL is a cell surface component that is a member of a family of adhesion/homing receptors which play important roles in leukocyte-endothelial cell interactions. The molecule is composed of multiple domains: one homologous to lectins, one to epidermal growth factor, and two to the consensus repeat units found in C3/C4 binding proteins.

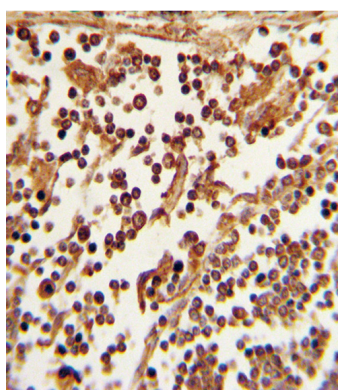
References

Zebrowska,A., et.al., Pol J Pathol 60 (1), 26-34 (2009)

Images

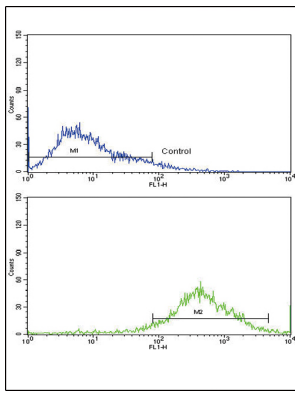


Western blot analysis of SELL Antibody (C-term) (Cat. #AP6990b) in Jurkat cell line lysates (35ug/lane).SELL (arrow) was detected using the purified Pab.



Formalin-fixed and paraffin-embedded human lymph tissue with SELL Antibody (C-term), which was peroxidase-conjugated to the secondary antibody, followed by DAB staining. This data demonstrates the use of this antibody for immunohistochemistry; clinical relevance has not been evaluated.

Flow cytometric analysis of jurkat cells using SELL Antibody (C-term)(bottom histogram) compared to a negative control cell (top histogram). FITC-conjugated goat-anti-rabbit secondary antibodies were used for the analysis.



Please note: All products are 'FOR RESEARCH USE ONLY. NOT FOR USE IN DIAGNOSTIC OR THERAPEUTIC PROCEDURES'.