

FRS2 Polyclonal Antibody

Catalog # AP69974

Product Information

Application	WB
Primary Accession	Q8WU20
Reactivity	Human, Mouse
Host	Rabbit
Clonality	Polyclonal
Calculated MW	57029

Additional Information

Gene ID	10818
Other Names	FRS2; Fibroblast growth factor receptor substrate 2; FGFR substrate 2; FGFR-signaling adaptor SNT; Suc1-associated neurotrophic factor target 1; SNT-1
Dilution	WB~~Western Blot: 1/500 - 1/2000. ELISA: 1/40000. Not yet tested in other applications.
Format	Liquid in PBS containing 50% glycerol, 0.5% BSA and 0.09% (W/V) sodium azide.
Storage Conditions	-20°C

Protein Information

Name	FRS2
Function	Adapter protein that links activated FGR and NGF receptors to downstream signaling pathways. Plays an important role in the activation of MAP kinases and in the phosphorylation of PIK3R1, the regulatory subunit of phosphatidylinositol 3-kinase, in response to ligand-mediated activation of FGFR1. Modulates signaling via SHC1 by competing for a common binding site on NTRK1.
Cellular Location	Endomembrane system. Note=Cytoplasmic, membrane- bound
Tissue Location	Highly expressed in heart, brain, spleen, lung, liver, skeletal muscle, kidney and testis

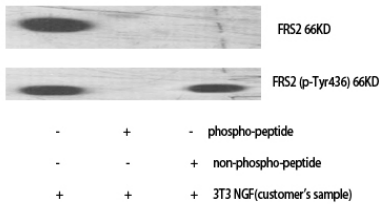
Background

Adapter protein that links activated FGR and NGF receptors to downstream signaling pathways. Plays an

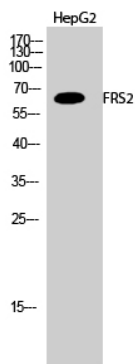
important role in the activation of MAP kinases and in the phosphorylation of PIK3R1, the regulatory subunit of phosphatidylinositol 3- kinase, in response to ligand-mediated activation of FGFR1. Modulates signaling via SHC1 by competing for a common binding site on NTRK1.

Images

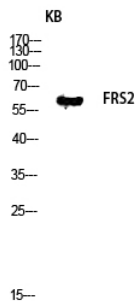
Western Blot analysis of various cells using FRS2
Polyclonal Antibody diluted at 1 : 1000



Western Blot analysis of HepG2 cells using FRS2
Polyclonal Antibody diluted at 1 : 1000



Western blot analysis of KB lysis using FRS2 antibody.
Antibody was diluted at 1:1000



Please note: All products are 'FOR RESEARCH USE ONLY. NOT FOR USE IN DIAGNOSTIC OR THERAPEUTIC PROCEDURES'.