

FSHR Polyclonal Antibody

Catalog # AP69978

Product Information

Application	WB, IHC-P, IF
Primary Accession	P23945
Reactivity	Human, Mouse, Rat
Host	Rabbit
Clonality	Polyclonal
Calculated MW	78238

Additional Information

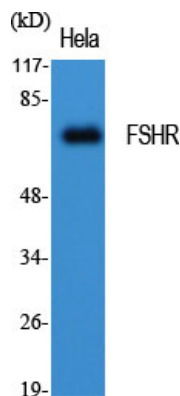
Gene ID	2492
Other Names	FSHR; LGR1; Follicle-stimulating hormone receptor; FSH-R; Follitropin receptor
Dilution	WB~~1:1000 IHC-P~~N/A IF~~1:50~200
Format	Liquid in PBS containing 50% glycerol, 0.5% BSA and 0.09% (W/V) sodium azide.
Storage Conditions	-20°C

Protein Information

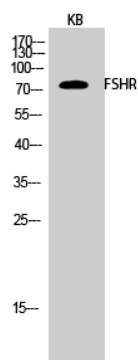
Name	FSHR
Synonyms	LGR1
Function	G protein-coupled receptor for follitropin, the follicle- stimulating hormone (PubMed: 11847099 , PubMed: 24058690 , PubMed: 24692546). Through cAMP production activates the downstream PI3K-AKT and ERK1/ERK2 signaling pathways (PubMed: 24058690).
Cellular Location	Cell membrane; Multi-pass membrane protein
Tissue Location	Sertoli cells and ovarian granulosa cells.

Background

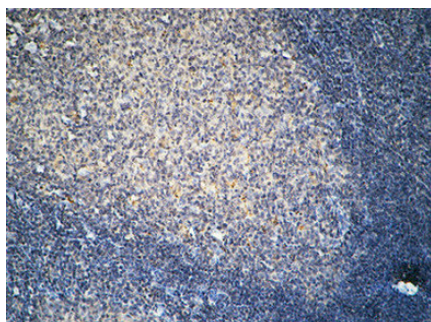
G protein-coupled receptor for follitropin, the follicle-stimulating hormone (PubMed: [11847099](#), PubMed:[24058690](#), PubMed:[24692546](#)). Through cAMP production activates the downstream PI3K-AKT and ERK1/ERK2 signaling pathways (PubMed:[24058690](#)).



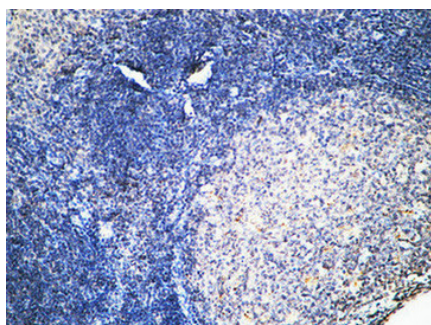
Western Blot analysis of various cells using FSHR Polyclonal Antibody diluted at 1 : 1000



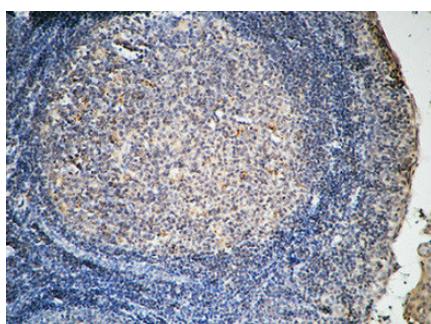
Western Blot analysis of KB cells using FSHR Polyclonal Antibody diluted at 1 : 1000



Immunohistochemical analysis of paraffin-embedded Human Amygdala. 1, Antibody was diluted at 1:100(4°,overnight). 2, High-pressure and temperature EDTA, pH8.0 was used for antigen retrieval. 3,Secondary antibody was diluted at 1:200(room temperature, 30min).



Immunohistochemical analysis of paraffin-embedded Human Amygdala. 1, Antibody was diluted at 1:100(4°,overnight). 2, High-pressure and temperature EDTA, pH8.0 was used for antigen retrieval. 3,Secondary antibody was diluted at 1:200(room temperature, 30min).



Immunohistochemical analysis of paraffin-embedded Human Amygdala. 1, Antibody was diluted at 1:100(4°,overnight). 2, High-pressure and temperature EDTA, pH8.0 was used for antigen retrieval. 3,Secondary antibody was diluted at 1:200(room temperature, 30min).

Please note: All products are 'FOR RESEARCH USE ONLY. NOT FOR USE IN DIAGNOSTIC OR THERAPEUTIC PROCEDURES'.