

Fyb Polyclonal Antibody

Catalog # AP69987

Product Information

| | |
|-------------------|------------------------|
| Application | WB, E |
| Primary Accession | Q15117 |
| Reactivity | Human, Mouse, Rat |
| Host | Rabbit |
| Clonality | Polyclonal |
| Calculated MW | 85387 |

Additional Information

| | |
|--------------------|--|
| Gene ID | 2533 |
| Other Names | FYB; SLAP130; FYN-binding protein; Adhesion and degranulation promoting adaptor protein; ADAP; FYB-120/130; p120/p130; FYN-T-binding protein; SLAP-130; SLP-76-associated phosphoprotein |
| Dilution | WB~~Western Blot: 1/500 - 1/2000. ELISA: 1/40000. Not yet tested in other applications. E~~N/A |
| Format | Liquid in PBS containing 50% glycerol, 0.5% BSA and 0.09% (W/V) sodium azide. |
| Storage Conditions | -20°C |

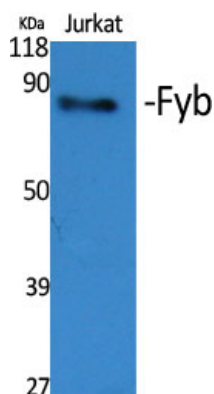
Protein Information

| | |
|-------------------|--|
| Name | FYB1 (HGNC:4036) |
| Synonyms | FYB, SLAP130 |
| Function | Acts as an adapter protein of the FYN and LCP2 signaling cascades in T-cells (By similarity). May play a role in linking T-cell signaling to remodeling of the actin cytoskeleton (PubMed: 10747096 , PubMed: 16980616). Modulates the expression of IL2 (By similarity). Involved in platelet activation (By similarity). Prevents the degradation of SKAP1 and SKAP2 (PubMed: 15849195). May be involved in high affinity immunoglobulin epsilon receptor signaling in mast cells (By similarity). |
| Cellular Location | Cytoplasm. Nucleus {ECO:0000255 PROSITE-ProRule:PRU00768}. Cell junction {ECO:0000250 UniProtKB:O35601}. Note=Colocalizes with TMEM47 at cell-cell contacts in podocytes. {ECO:0000250 UniProtKB:O35601} |
| Tissue Location | Expressed in hematopoietic tissues such as myeloid and T-cells, spleen and thymus. Not expressed in B-cells, nor in non- lymphoid tissues |

Background

Acts as an adapter protein of the FYN and LCP2 signaling cascades in T-cells. Modulates the expression of interleukin-2 (IL-2). Involved in platelet activation. Prevents the degradation of SKAP1 and SKAP2. May play a role in linking T-cell signaling to remodeling of the actin cytoskeleton.

Images



Western Blot analysis of various cells using Fyb Polyclonal Antibody



Western Blot analysis of COLO205 cells using Fyb Polyclonal Antibody

Please note: All products are 'FOR RESEARCH USE ONLY. NOT FOR USE IN DIAGNOSTIC OR THERAPEUTIC PROCEDURES'.