

Galectin-8 Polyclonal Antibody

Catalog # AP70023

Product Information

Application	WB, IHC-P, IF, ICC, E
Primary Accession	O00214
Reactivity	Human, Mouse
Host	Rabbit
Clonality	Polyclonal
Calculated MW	35808

Additional Information

Gene ID	3964
Other Names	LGALS8; Galectin-8; Gal-8; Po66 carbohydrate-binding protein; Po66-CBP; Prostate carcinoma tumor antigen 1; PCTA-1
Dilution	WB~~Western Blot: 1/500 - 1/2000. Immunohistochemistry: 1/100 - 1/300. Immunofluorescence: 1/200 - 1/1000. ELISA: 1/20000. Not yet tested in other applications. IHC-P~~N/A IF~~1:50~200 ICC~~N/A E~~N/A
Format	Liquid in PBS containing 50% glycerol, 0.5% BSA and 0.09% (W/V) sodium azide.
Storage Conditions	-20°C

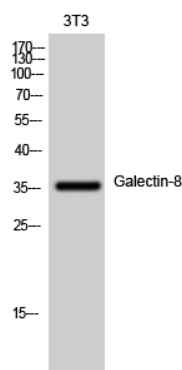
Protein Information

Name	LGALS8 (HGNC:6569)
Function	Beta-galactoside-binding lectin that acts as a sensor of membrane damage caused by infection and restricts the proliferation of infecting pathogens by targeting them for autophagy (PubMed: 22246324 , PubMed: 28077878). Detects membrane rupture by binding beta-galactoside ligands located on the luminal side of the endosome membrane; these ligands becoming exposed to the cytoplasm following rupture (PubMed: 22246324 , PubMed: 28077878). Restricts infection by initiating autophagy via interaction with CALCOCO2/NDP52 (PubMed: 22246324 , PubMed: 28077878). Required to restrict infection of bacterial invasion such as <i>S.typhimurium</i> (PubMed: 22246324). Also required to restrict infection of Picornaviridae viruses (PubMed: 28077878). Has a marked preference for 3'-O-sialylated and 3'-O-sulfated glycans (PubMed: 21288902).
Cellular Location	Cytoplasmic vesicle. Cytoplasm, cytosol
Tissue Location	Ubiquitous. Selective expression by prostate carcinomas versus normal

Background

Beta-galactoside-binding lectin that acts as a sensor of membrane damage caused by infection and restricts the proliferation of infecting pathogens by targeting them for autophagy (PubMed:[22246324](#), PubMed:[28077878](#)). Detects membrane rupture by binding beta-galactoside ligands located on the luminal side of the endosome membrane; these ligands becoming exposed to the cytoplasm following rupture (PubMed:[22246324](#), PubMed:[28077878](#)). Restricts infection by initiating autophagy via interaction with CALCOCO2/NDP52 (PubMed:[22246324](#), PubMed:[28077878](#)). Required to restrict infection of bacterial invasion such as *S.typhimurium* (PubMed:[22246324](#)). Also required to restrict infection of Picornaviridae viruses (PubMed:[28077878](#)). Has a marked preference for 3'-O-sialylated and 3'-O-sulfated glycans (PubMed:[21288902](#)).

Images



Western Blot analysis of 3T3 cells using Galectin-8
Polyclonal Antibody diluted at 1 : 1000

Please note: All products are 'FOR RESEARCH USE ONLY. NOT FOR USE IN DIAGNOSTIC OR THERAPEUTIC PROCEDURES'.