

GCP6 Polyclonal Antibody

Catalog # AP70065

Product Information

Application	WB, IHC-P
Primary Accession	Q96RT7
Reactivity	Human
Host	Rabbit
Clonality	Polyclonal
Calculated MW	200498

Additional Information

Gene ID	85378
Other Names	TUBGCP6; GCP6; KIAA1669; Gamma-tubulin complex component 6; GCP-6
Dilution	WB--Western Blot: 1/500 - 1/2000. Immunohistochemistry: 1/100 - 1/300. ELISA: 1/20000. Not yet tested in other applications. IHC-P--Western Blot: 1/500 - 1/2000. Immunohistochemistry: 1/100 - 1/300. ELISA: 1/20000. Not yet tested in other applications.
Format	Liquid in PBS containing 50% glycerol, 0.5% BSA and 0.09% (W/V) sodium azide.
Storage Conditions	-20°C

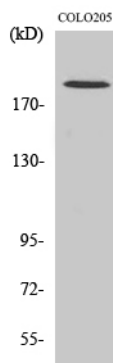
Protein Information

Name	TUBGCP6
Synonyms	GCP6, KIAA1669
Function	Component of the gamma-tubulin ring complex (gTuRC) which mediates microtubule nucleation (PubMed: 11694571 , PubMed: 38305685 , PubMed: 38609661 , PubMed: 39321809). The gTuRC regulates the minus-end nucleation of alpha-beta tubulin heterodimers that grow into microtubule protofilaments, a critical step in centrosome duplication and spindle formation (PubMed: 38305685 , PubMed: 38609661 , PubMed: 39321809).
Cellular Location	Cytoplasm, cytoskeleton, microtubule organizing center, centrosome

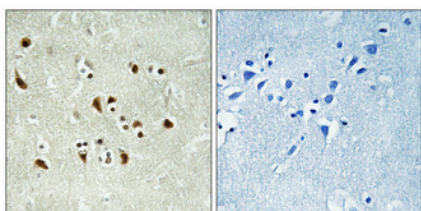
Background

Gamma-tubulin complex is necessary for microtubule nucleation at the centrosome.

Images



Western Blot analysis of various cells using GCP6 Polyclonal Antibody diluted at 1 : 1000



Immunohistochemical analysis of paraffin-embedded Human brain. Antibody was diluted at 1:100(4°, overnight). High-pressure and temperature Tris-EDTA, pH8.0 was used for antigen retrieval. Negative control (right) obtained from antibody was pre-absorbed by immunogen peptide.

Please note: All products are 'FOR RESEARCH USE ONLY. NOT FOR USE IN DIAGNOSTIC OR THERAPEUTIC PROCEDURES'.